

DEPARTMENT OF THE ARMY TECHNICAL MANUAL

**GENERAL SUPPORT MAINTENANCE REPAIR PARTS
AND SPECIAL TOOLS LISTS (INCLUDING DEPOT
MAINTENANCE REPAIR PARTS AND SPECIAL TOOLS)
OSCILLOSCOPE OS-46/U AND OS-46A/U
(NSN 6625-00-710-9624)**

**Headquarters, Department of the Army, Washington, DC
14 March 1975**

Current as of December 1974

	Paragraph	Page
Section I. INTRODUCTION		
Scope	1-1	
General	1-2	
Explanation of columns	1-3	
Special information	1-4	4
Location of repair parts	1-5	4
Abbreviations (Not applicable)	1-6	4
Reporting of equipment publication improvements	1-7	4
II. REPAIR PARTS LIST		6
III. SPECIAL TOOLS, TEST AND SUPPORT EQUIPMENT (Not applicable)		
IV. INDEX - NATIONAL STOCK NUMBER AND REFERENCE NUMBER		
CROSS-REFERENCE TO FIGURE AND ITEM NUMBER		22

SECTION I

INTRODUCTION

1-1. Scope

This manual lists repair parts and special tools required for the performance of general support and depot maintenance of the OS-46/U and OS-46A/U. The PCCN for the equipment is GTEAFW for all models.

NOTE

No parts authorized for stockage at direct support.

1-2. General

This repair parts and special tools list is divided into the following sections:

a. Repair Parts List - Section II. A list of repair parts authorized for the performance of maintenance at the direct support, general support, and depot level. This repair parts list is arranged in alphabetical order.

b. Special Tools, Test and Support Equipment - Section III. Not applicable.

c. Index - National Stock Number and Reference Number Cross-Reference to Figure and Item Number - Section IV. A list, in ascending numerical sequence, of all National stock numbers appearing in the listings, followed by a list, in alphanumeric sequence, of all reference numbers appearing in the listings. National stock number and reference numbers are cross-referenced to each illustrative figure and item number or reference designation appearance.

1-3. Explanation of Columns

The following provides an explanation of columns found in the tabular list.

a. Source, Maintenance, and Recoverability Codes (SMR).

(1) *Source code.* Indicates the manner of acquiring support items for maintenance, repair, or overhaul of end items. Source codes are —

<i>Code</i>	<i>Explanation</i>
-------------	--------------------

PA — Item procured and stocked for anticipated or known usage.

PB — Item procured and stocked for insurance purposes because essentiality dictates that a minimum quantity be available in the supply systems.

PC — Item procured and stocked and which otherwise would be coded PA except that it is deteriorative in nature.

PD — Support item, excluding support equipment.

<i>Code</i>	<i>Explanation</i>
	procured for initial issue or outfitting and stocked only for subsequent or additional initial issues or outfittings. Not subject to automatic replenishment.
PE —	Support equipment procured and stocked for initial issue or outfitting to specified maintenance repair activities.
PF —	Support equipment which will not be stocked but which will be centrally procured on demand.
PG —	Item procured and stocked to provide for sustained support for the life of the equipment. It is applied to an item peculiar to the equipment which because of probable discontinuance or shutdown of production facilities would prove uneconomical to reproduce at a later time.
KD —	An item of depot overhaul/repair kit and not purchased separately. Depot kit defined as a kit that provides items required at the time of overhaul or repair.
KF —	An item of a maintenance kit and not purchased separately. Maintenance kit defined as a kit that provides an item that can be replaced at organizational or direct support or general support levels of maintenance.
KB —	Item included in both a depot overhaul/repair kit and a maintenance kit.
MO —	Item to be manufactured or fabricated at organizational level.
MF —	Item to be manufactured or fabricated at direct support maintenance level.
MB —	Item to be manufactured or fabricated at general support maintenance level.
MD —	Item to be manufactured or fabricated at depot maintenance level.
AO —	Item to be assembled at organizational level.
AF —	Item to be assembled at direct support maintenance level.
AH —	Item to be assembled at general support maintenance level.
AD —	Item to be assembled at depot maintenance level.
XA —	Item is not procured or stocked because the requirements for the item will result in the replacement of the next higher assembly.
XB —	Item is not procured or stocked. If not

<i>Code</i>	<i>Explanation</i>
	available through salvage, requisition.
X C -	Installation drawing, diagram instruction sheet, field service drawing, that is identified by manufacturers' part number.
X D -	Support items can be requisitioned with justification.

NOTE

Cannibalization or salvage may be used as a source of supply for any items source coded above except those coded XA and aircraft support items as restricted by AR 700-42.

(2) Maintenance code. Maintenance codes are assigned to indicate the levels of maintenance authorized to USE and REPAIR support items. The maintenance codes are entered in the third and fourth positions of the Uniform SMR Code Format as follows -

(a) Use (third position). The maintenance code entered in the third position indicates the lowest maintenance level authorized to remove, replace, and use the support item. The maintenance code entered in the third position indicates one of the following levels of maintenance.

<i>Code</i>	<i>Application/Explanation</i>
O -	Support item is removed, replaced, used at the organizational level of maintenance.

NOTE

A code "C" may be used in this position to denote crew or operator maintenance performed within organizational maintenance.

F -	Support item is removed, replaced, used at the direct support maintenance level.
H -	Support item is removed, replaced, Used at the general support maintenance.
D -	Support items that are removed, replaced, used at depot only.

(b) **Repair (fourth position).** The maintenance code entered in the fourth position indicates whether the item is to be repaired and identifies the lowest maintenance level with the capability to perform complete repair (i.e., all authorized maintenance functions). When a maintenance code is not used a dash (-) sign is entered. For multi-service equipment/systems or when a code is entered, this position will contain one of the following maintenance codes as assigned by the service(s) that require the code-

<i>Code</i>	<i>Application/Explanation</i>
O -	The lowest maintenance level capable of complete repair of the support item is the organizational level.
F -	The lowest maintenance level capable of

<i>Code</i>	<i>Application/Explanation</i>
	complete repair of the support item is direct support.
H -	The lowest maintenance level capable of complete repair of the support item is general support.
D -	The lowest maintenance level capable of complete repair of the support item is the depot level.
L -	Repair restricted to designated Specialized Repair Activity.
Z -	Non-repairable. No repair is authorized.
B -	No repair is authorized. The item may be reconditioned by adjusting, lubricating, etc., at the user level. No parts or special tools are procured for the maintenance of this item.

(3) **Recoverability** code. Recoverability codes are assigned to support items to indicate the disposition action on unserviceable items. The recoverability code is entered in the fifth position of the uniform SMR Code Format as follows -

<i>code</i>	<i>Explanation</i>
Z -	Nonrepairable item. When unserviceable, condemn and dispose at the level indicated in the first digit of the maintenance code.
O -	Repairable item. When uneconomically repairable, condemn and dispose at organizational level.
F -	Repairable item. When uneconomically repairable, condemn and dispose at the direct support level.
H -	Repairable item. When uneconomically repairable, condemn and dispose at the general support level.
D -	Repairable item. When beyond lower level repair capability, return to depot. Condemnation and disposal not authorized below depot level.
L -	Repairable item. Repair, condemnation, and disposal not authorized below depot/Specialized Repair Activity level.
A -	Item requires special handling or condemnation procedures because of specific reasons (i.e., precious metal content, high dollar value, critical material or hazardous material).

b. National Stock Number (NSN). Indicates the **National stock** number assigned **to the listed item and will be used** for requisitioning **purposes.**

c. Description. Indicates the Federal item name **and a minimum description** required to identify the **item. The last line indicates the reference number**

followed by the applicable Federal Supply Code for Manufacturer (**FSCM**) in parentheses, The FSCM is used as an element in item identification to designate manufacturer or distributor or Government agency, etc., and is identified in SB 708-42.

d. **Unit of Measure (U/M).** Indicates the standard or basic quantity by which the listed item is used in performing the actual maintenance function. This measure is expressed by a two-character alphabetical abbreviation; e.g., ea, in, pr, etc., and is the basis used to indicate quantities and allowances in subsequent columns. When the unit of measure differs from the unit of issue, the lowest unit of issue that will satisfy the required units of measure will be requisitioned.

e. **Quantity Incorporated in Unit, This** column indicates the quantity of the item used in the equipment. Subsequent appearances of the same item in the same assembly are indicated by the letters "REF".

f. **30-Day DS/GS Maintenance Allowances.**

NOTE

Allowances in GS column are for GS maintenance only.

(1) The repair parts indicated by asterisk entries in separate allowance columns for **DS** and **GS** represent those authorized for use at that category of maintenance to be requisitioned on an "as required" basis, until stockage is based **on demand** in accordance with **AR 710-2**.

(2) Allowance quantities are indicated in the special tool lists section for special tools, **TMDE**, and other support equipment.

g. **1-Year Allowances Per 100 Equipments/Contingency Planning Purposes.** Column intentionally left blank.

h. **Depot Maintenance Allowance Per 100 Equipments.** This column indicates opposite the first appearance of each item the total quantity authorized for depot maintenance of **100 equipments**.

i. **Illustration.** This column is divided as follows:

(1) **Figure number.** Indicates the figure number of the illustration on which the **item is shown in TM 11-5131**.

(2) **Item number.** Indicates the item number or reference designation used to **reference the item in the illustration**.

1-4. Special information

a. **Usable on codes are included in column 3. Uncoded items are applicable to all models. Identification of the usable on codes used in this publication are —**

Code	Used on
BAA	OS-46/U
BUF	OS-46A/U

b. **The following publications pertain to the equipment and its components:**

TM 11-5131

Oscilloscopes OS-46/U, OS-46A/U, OS-5001/U, OS-5001A/U, and OS-5001B/U.

TM 11-6625-285-20P

Organizational Maintenance Repair Parts and Special Tools Lists: Oscilloscopes OS-46/U, OS-46A/U, OS-5001/U, and OS-5001A, B/U.

1-5. Location of Repair Parts

a. **This manual contains one cross-reference index (sec IV) to be used to locate a repair part when either the National stock number or reference number (manufacturer's part number) is known. The first column in the index is prepared in numerical or alphanumeric sequence in ascending order. The reference numbers (manufacturer's part numbers) are listed immediately following the last listed National stock number in the index of National stock numbers.**

b. **When the National stock number or reference number is known, follow the procedures given in (1) and (2) below.**

(1) **Refer to the index of National stock number (sec IV) and locate the National stock number or reference number. The NSN and reference number are cross-referenced to the applicable figure and item number or reference designation.**

(2) **Refer to the repair parts list (sec II) and locate the figure number (col 10a) and item number or reference designation (col 10b) as noted in the NSN index.**

c. **When the figure and item number or reference designation are known, scrutinize columns 10a and 10b of the repair parts list (sec II) until the item is located.**

d. **When the NSN, reference number, figure number, item number and reference designation are not known, scrutinize column 3 of the repair parts list (sec II), which is arranged in alphabetical order.**

1-6. Abbreviations

Not applicable

1-7. Reporting of Equipment Publication Improvements

The reporting of errors, omissions, and recommendations for improving this publication by the individual user is encouraged. Reports should be submitted on DA Form 2028 (Recommended Changes to Publications and Blank Forms) and forwarded direct to Commander, US Army Electronics Command, ATTN: AMSEL-MA-D, Fort Monmouth, NJ 07703.

(Next printed page is 6)

SECTION II

TM 11-6625-285-40P

(1) SMR CODE	(2) NATIONAL STOCK NUMBER	(3) DESCRIPTION	(4) UNIT OF MEAS	(5) QTY INC IN UNIT	(6) 30-DAY DS MAINT ALLOWANCE			(7) 30-DAY GS MAINT ALLOWANCE			(8) 1-YR ALW PER 100 EQUIP CNTGCT	(9) DEPOT MAINT ALW PER 100 EQUIP	(10) ILLUSTRATION	
					(a)	(b)	(c)	(a)	(b)	(c)			(a)	(b)
					1-20	21-50	51-100	1-20	21-50	51-100			FIGURE NO.	ITEM NO.
		REFERENCE NUMBER & MFR. CODE USABLE ON CODE PROMPT JUMBI TELESCOPES DS-467U, DS-4687U , OS-5001/U, OS-5001A, B/U												
PAZZ		BEZEL, INSTRUMENT MOUNTING NO-REF-DESIG.. CRS, 6-17/32 IN OD X 5-5/8 IN ID X 1-3/16 IN H1 C2450 (91820)	EA	1							003			
PAZZ	6975-00-2730788	BUSHING, STRAIN RELIEF NO-REF-DESIG..... BAA SR6P (28520)	EA	1			*	*	*		003			
PAZZ	6145-00-5001726	CABLE, POWER ELECTRICAL NO-REF-DESIG 6.. FT LG1 CO-03MGF3-18-033* D (81349)	EA	1				*	*	*		010		
PAZZ	6145-00-5481258	CABLE, POWER ELECTRICAL NO-REF-DESIG 8.. FT LG1 CO-02MGF2-18-031* D (81349)	EA	1				*	*	*		010		
PAZZ	6145-00-5426092	CABLE, RADIO FREQUENCY NO-REF-DESIG 8.. FEET LONG1 RC58C1 (81349)	EA	1				*	*	*		010		
PAZZ		CABLE, RADIO FREQUENCY W101 2 FEET LONG1 C2480-1 (91820)	EA	1				*	*	*		010	W101	
PAZZ	610-00-85078225	CAPACITOR, FIXED, PLASTIC DIELECTRIC C112 1 UUF, 500 VDCM1 RTMASP380 (80131)	EA	4				*	*	*		*	30 C112	
PAZZ	6910-00-5078225	CAPACITOR, FIXED, PLASTIC DIELECTRIC C113 1 UUF, 500 VDCM1 RTMASP380 (80131)	EA	REF				*	*	*		*	30 C113	
PAZZ	6910-00-5078225	CAPACITOR, FIXED, PLASTIC DIELECTRIC C513 1 UUF, 500 VDCM1 RTMASP380 (80131)	EA	REF				*	*	*		*	30 C513	
PAZZ	6910-00-5078225	CAPACITOR, FIXED, PLASTIC DIELECTRIC C514 1 UUF, 500 VDCM1 RTMASP380 (80131)	EA	REF				*	*	*		*	30 C514	
PAZZ		CAPACITOR, FIXED, CERAMIC DIELECTRIC C513 1.5 UUF, 500 VDCM1 CC20AK1R5D (81349)	EA	2				*	*	*		*	30 C513	
PAZZ		CAPACITOR, FIXED, CERAMIC DIELECTRIC C514 1.5 UUF, 500 VDCM1 CC20AK1R5D (81349)	EA	REF				*	*	*		*	30 C514	
PAZZ		CAPACITOR, FIXED, CERAMIC DIELECTRIC C112 5 UUF, 500 VDCM1 CC20AM050C (81349)	EA	2				*	*	*		*	30 C112	
PAZZ		CAPACITOR, FIXED, CERAMIC DIELECTRIC C113 5 UUF, 500 VDCM1 CC20AM050C (81349)	EA	REF				*	*	*		*	30 C113	
PAZZ		CAPACITOR, FIXED, MICA DIELECTRIC C103... B2 UUF PORMSPCT, 500 VDCM1 CM20C820JP3 (81349)	EA	1				*	*	*		003	32 C103	
PAZZ		CAPACITOR, FIXED, MICA DIELECTRIC C314... 100 UUF PORMIOPCT1 CM20C101K (81349)	EA	3				*	*	*		*	33 C314	
PAZZ		CAPACITOR, FIXED, MICA DIELECTRIC C503... 100 UUF PORMIOPCT1 CM20C101K (81349)	EA	REF				*	*	*		*	32 C503	
PAZZ		CAPACITOR, FIXED, MICA DIELECTRIC C512... 100 UUF PORMIOPCT1 CM20C101K (81349)	EA	REF				*	*	*		*	33 C512	
PAZZ		CAPACITOR, FIXED, MICA DIELECTRIC C306... CONTINUED	EA	1				*	*	*		003	32 C306	

SECTION II

TM11-6625-285-40P

(1) SMB CODE	(2) NATIONAL STOCK NUMBER	(3) DESCRIPTION REFERENCE NUMBER & MFR. CODE USABLE ON CODE	(4) UNIT OF MEAS	(5) QTY INC IN UNIT	(6) 30-DAY DS MAINT ALLOWANCE			(7) 30-DAY GS MAINT ALLOWANCE			(8) 1-YR ALS PER 100 EQUIP CHNGCT	(9) DEPOT ALS PER 100 EQUIP	(10) ILLUSTRATION	
					(a)	(b)	(c)	(a)	(b)	(c)			(a)	(b)
					1-20	21-50	51-100	1-20	21-50	51-100			FIGURE NO.	ITEM NO.
		150 WC PORM10PCT; CH20B151K (81349) BUFP												
PANZZ		CAPACITOR, FIXED, MICA DIELECTRIC C105... 1000 UUF PORMSPCT, 500 VDCW; CM30E102J (81349)	EA	2				*	*	*		*	32	C105
PANZZ		CAPACITOR, FIXED, MICA DIELECTRIC C307... 1000 UUF PORMSPCT, 300 VDCW; CM30E102J (81349)	EA	REF				*	*	*		*	32	C307
PANZZ		CAPACITOR, FIXED, MICA DIELECTRIC C107... 6800 UUF PORMSPCT, 300 VDCW; CM35E682JP3 (81349)	EA	2				*	*	*		*	32	C107
PANZZ		CAPACITOR, FIXED, MICA DIELECTRIC C308... 6800 UUF PORMSPCT, 300 VDCW; CM35E682JP3 (81349)	EA	REF				*	*	*		*	32	C308
PANZZ	5910-00-6887312	CAPACITOR, FIXED, CERAMIC DIELECTRIC C402 10,000 UUF; 20HKBS1 (56289)	EA	1				*	*	*	003	*	30	C402
PANZZ		CAPACITOR, FIXED, CERAMIC DIELECTRIC C108 10,000 UUF; CK63Y1032 (81349)	EA	4				*	*	*		*	34	C108
PANZZ		CAPACITOR, FIXED, CERAMIC DIELECTRIC C109 10,000 UUF; CK63Y1032 (81349)	EA	REF				*	*	*		*	34	C109
PANZZ		CAPACITOR, FIXED, CERAMIC DIELECTRIC C301 10,000 UUF; CK63Y1032 (81349)	EA	REF				*	*	*		*	38	C301
PANZZ		CAPACITOR, FIXED, CERAMIC DIELECTRIC C404 10,000 UUF; CK63Y1032 (81349)	EA	REF				*	*	*		*	30	C404
PANZ	5910-00-8474791	CAPACITOR, FIXED, PAPER DIELECTRIC 40,000 UUF; LMP454 (81349)	EA	1				*	*	*	003	*	32	C310
PANZ	5910-00-5439081	CAPACITOR, FIXED, PAPER DIELECTRIC 47000 UUF PORM20PCT; CPO5A1EF173N (81349)	EA	1				*	*	*	003	*	34	C302
PANZ	5910-00-6668886	CAPACITOR, FIXED, PAPER DIELECTRIC 50,000 UUF; KX248 (18876)	EA	1				*	*	*	003	*	30	C401
KBHZ		CAPACITOR, FIXED, PAPER DIELECTRIC 50,000 UUF; PB3700 (84300)	EA	1				*	*	*		*	30	C401
PANZ	5910-00-5360406	CAPACITOR, FIXED, PAPER DIELECTRIC 100,000 UUF FORM10PCT; CPO5A1EG104K (81349)	EA	6				*	*	*		*	32	C101
PANZ	5910-00-8363406	CAPACITOR, FIXED, PAPER DIELECTRIC 100,000 UUF PORN10PCT; CPO5A1EG104K (81349)	EA	REF				*	*	*		*	31	C110
PANZ	5910-00-8360406	CAPACITOR, FIXED, PAPER DIELECTRIC 100,000 UUF PORN10PCT; CPO5A1EG104K (81369)	EA	REF				*	*	*		*	31	C111
PANZ	5910-00-8360406	CAPACITOR, FIXED, PAPER DIELECTRIC 100,000 UUF PORM10PCT; CPO5A1EG104K (81349)	EA	REF				*	*	*		*	32	C501
PANZ	5910-00-8360406	CAPACITOR, FIXED, PAPER DIELECTRIC 100,000 UUF PORN10PCT; CPO5A1EG104K (81349)	EA	REF				*	*	*		*	31	C510
PANZ	5910-00-8360406	CAPACITOR, FIXED, PAPER DIELECTRIC 100,000 UUF PORN10PCT; CPO5A1EG104K (81349)	EA	REF				*	*	*		*	31	C511

SECTION II

TM11-6625-285-40P

(1) SHR CODE	(2) NATIONAL STOCK NUMBER	(3) DESCRIPTION REFERENCE NUMBER & MFR. CODE USABLE ON CODE		(4) UNIT OF MEAS	(5) QTY INC IN UNIT	(6) 30-DAY DS MAINT ALLOWANCE			(7) 30-DAY GS MAINT ALLOWANCE			(8) 1-YR ALM PER 100 EQUIP CNTGCT	(9) DEPOT MAINT ALW PER 100 EQUIP	(10) ILLUSTRATION		
						(a)	(b)	(c)	(a)	(b)	(c)			(a)	(b)	
						1-20	21-50	51-100	1-20	21-50	51-100			FIGURE NO.	ITEM NO.	
		CONTINUED														
		100,000 UUF PORM10PCT: CPOSAL1E474M (81349)														
		CAPACITOR, FIXED, PAPER DIELECTRIC C303.. 470,000 UUF PORM20PCT: CPOSAL1E474M (81349)		EA	3				*	*	*			34	C303	
PAMZZ		CAPACITOR, FIXED, PAPER DIELECTRIC C304.. 470,000 UUF PORM20PCT: CPOSAL1E474M (81349)		EA	REF				*	*	*			34	C304	
PAMZZ		CAPACITOR, FIXED, PAPER DIELECTRIC C305.. 470,000 UUF PORM20PCT: CPOSAL1E474M (81349)		EA	REF				*	*	*			34	C305	
PAMZZ	5910-00-8813400	CAPACITOR, FIXED, PAPER DIELECTRIC C603.. 500,000 UUF: KT104A (14655)		EA	3				*	*	*			32	C603	
PAMZZ	5910-0-8813400	CAPACITOR, FIXED, PAPER DIELECTRIC C604.. 500,000 UUF: KT104A (14655)		EA	REF				*	*	*			32	C604	
PAMZZ	5910-00-881-8813400	CAPACITOR, FIXED, PAPER DIELECTRIC C605.. 500,000 UUF: KT104A (14655)		EA	REF				*	*	*			32	C605	
PAMZZ	5910-00-7211994	CAPACITOR, FIXED, PAPER DIELECTRIC C603.. 500,000 UUF: PLN20P5 (83129)		EA	3				*	*	*			32	C603	
PAMZZ	5910-00-7211994	CAPACITOR, FIXER PAPER DIELECTRIC C604.. 500,000 UUF: PLN20P5 (83129)		EA	REF				*	*	*			32	C604	
PAMZZ	5910-00-721194	CAPACITOR, FIXED, PAPER DIELECTRIC C605.. 500,000 UUF: PLN20P5 (83129)		EA	REF				*	*	*			32	C605	
PAMZZ		CAPACITOR, FIXED, PAPER DIELECTRIC C403.. 1 UF: MPTK2-1 (83129)		EA	1				*	*	*	003		30	C403	
PAMZZ		CAPACITOR, FIXED, PAPER DIELECTRIC C602.. 2 UF PORM10PCT: CPS1B1EF205K (81349)		EA	1				*	*	*	003		32	C602	
PAMZZ		CAPACITOR, FIXED, ELECTROLYTIC C607 4... UF: CE03F040R (81349)		EA	1				*	*	*	003		30	C607	
PAMZZ	DID-DO-1127260	CAPACITOR, FIXED, PAPER DIELECTRIC C311.. 2 SECT, 5 UF EA SECT: CPS3B4EF304W (81349)		EA	1				*	*	*	003		32	C311	
PAMZZ	5910-00-1958701	CAPACITOR, FIXED, ELECTROLYTIC C606 4... SECT, 10 UF EA SECT, 450 VDC: UP111145 (21226)		EA	1				*	*	*	003		32	C606	
PAMZZ	5910-00-6665571	CAPACITOR, FIXED, ELECTROLYTIC C309 25.. UF, 50 VDC: TVA1306 (56289)		EA	3				*	*	*			37	C309	
PAMZZ	910-W-6665571	CAPACITOR, FIXED, ELECTROLYTIC C312 25.. UF, 50 VDC: TVA1306 (56289)		EA	REF				*	*	*			33	C312	
PAMZZ	5910-00-6665571	CAPACITOR, FIXED, ELECTROLYTIC C505 25.. UF, 50 VDC: TVA1306 (56289)		EA	REF				*	*	*			33	C505	
PAMZZ	5910-00-1283869	CAPACITOR, FIXED, ELECTROLYTIC C309 25.. UF: T025-50 (03125)		EA	3				*	*	*			37	C309	
PAMZZ	5910-00-1283869	CAPCITOR, FIXED, ELECTROLYTIC C312 25.. CONTINUED		EA	REF				*	*	*			33	C312	

INC FORM 1

DE, GS, AND DEPOT MAINTENANCE REPAIR PARTS/TOOLS LIST

SECTION II

TM11-6625-285-40P

(1) SBR CODE	(2) NATIONAL STOCK NUMBER	(3) DESCRIPTION REFERENCE NUMBER & MFR. CODE USABLE ON CODE	(4) UNIT OF MEAS	(5) QTY INC IN UNIT	(6) 30-DAY GS MAINT ALLOWANCE			(7) 30-DAY GS MAINT ALLOWANCE			(8) 1-YR ALY PER 100 EQUIP CHNGCY	(9) DEPOT MAINT ALY PER 100 EQUIP	(10) ILLUSTRATION	
					(a)	(b)	(c)	(a)	(b)	(c)			(a)	(b)
					1-20	21-50	51-100	1-20	21-50	51-100			FIGURE NO.	ITEM NO.
		CONTINUED												
PAHZZ	5910-00-1283869	UF, 50 VDCM; T025-50 (83125)	BUF											
PAHZZ	5910-00-6823684	CAPACITOR, FIXED, ELECTROLYTIC C505 25.. UF, 50 VDCM; T025-50 (83125)	EA	REF				*	*	*		33	C505	
PAHZZ		CAPACITOR, FIXED, ELECTROLYTIC C601 80.. UF, 450 VDCM; M80-450 (83125)	EA	1				*	*	*	003	32	C601	
PAHZZ		CAPACITOR, FIXED, ELECTROLYTIC C601 80.. UF, 475 VDCM; J3012470 (18876)	EA	1				*	*	*	003	32	C601	
PAHZZ	5910-00-5430833	APACITOR, VARIABLE, CERAMIC DIELECTRIC... 102 3 TO 12 UF; V11A120 (81349)	EA	5				*	*	*		32	C102	
PAHZZ	5910-00-5430833	APACITOR, VARIABLE, CERAMIC DIELECTRIC... 104 3 TO 12 UF; V11A120 (81349)	EA	REF				*	*	*		32	C104	
PAHZZ	5910-00-3430833	APACITOR, VARIABLE, CERAMIC DIELECTRIC... 106 3 TO 12 UF; V11A120 (81349)	EA	REF				*	*	*		32	C106	
PAHZZ	5910-00-9430833	APACITOR, VARIABLE, CERAMIC DIELECTRIC... 313 3 TO 12 UF; V11A120 (81349)	EA	REF				*	*	*		35	C313	
PAHZZ	5910-00-5430833	CAPA CAPACITOR, VARIABLE, CERAMIC DIELECTRIC. C502 3 TO 12 UF; CV11 A120 (81349)	EA	REF				*	*	*		32	C502	
PAHZZ	5935-00-2577822	CLIP, ELECTRICAL NO-REF-DESIG..... B657 (71785)	EA	1				*	*	*	003			
PAOZZ		CLIP, ELECTRICAL M103 GRID PLATE TYPE... 118596 (78947)	EA	2				*	*	*	003		M103	
PAOZZ	5935-00-8385183	ADAPTER CONNec NO-REF-DESIG..... 210 (82879)	EA	1				*	*	*	003			
PAOZZ	5960-00-6244718	ELECTRON TUBE V601..... 082WA (81349)	EA	1				*	*	*	100	37	V601	
PAOZZ	5960-00-5431921	ELECTRON TUBE V603..... 1K2B (81349)	EA	2				*	*	*		38	V603	
PAOZZ	5960-00-3431921	ELECTRON TUBE V604..... K2B (81349)	EA	REF				*	*	*		38	V604	
PAOZZ	5960-00-2960517	ELECTRON TUBE V401..... 5ADP1 (81349)	EA	1				*	*	*	100	43	V401	
PAOZZ	5960-00-2620218	ELECTRON TUBE V605..... 5Y3MGTA (81349)	EA	1				*	*	*	100	43	V605	
PAOZZ	5960-00-2620160	ELECTRON TUBE V502..... 6J6WA (81349)	EA	2				*	*	*		32	V502	
PAOZZ	5960-00-2620160	ELECTRON TUBE V503..... 6J6WA (81349)	EA	REF				*	*	*		37	V503	
PAOZZ	65960-00-10870257	ELECTRON TUBE V303..... 1Q5G (81349)	EA	1				*	*	*	100	32	V303	
PAOZZ	5960-00-1667663	ELECTRON TUBE V101..... 12A07 (81349)	EA	8				*	*	*		32	V101	
PAOZZ	5960-00-1667663	ELECTRON TUBE V102..... 12A17 (81349)	EA	REF				*	*	*		32	V102	
PAOZZ	5960-00-1667663	ELECTRON TUBE V103..... 12A07 (81349)	EA	REF				*	*	*		32	V103	

USE FORM

SECTION II

TM11-6625-285-40P

(1) SRR CODE	(2) NATIONAL STOCK NUMBER	(3) DESCRIPTION REFERENCE NUMBER & MFR CODE USABLE ON CODE	(4) UNIT OF MEAS	(5) QTY INC IN UNIT	(6) 30-DAY DS MAINT ALLOWANCE			(7) 30-DAY GS MAINT ALLOWANCE			(8) 1-YR ALW PER 100 EQUIP CMTGTY	(9) DEPOT ALW PER 100 EQUIP	(10) ILLUSTRATION	
					(a)	(b)	(c)	(a)	(b)	(c)			(a)	(b)
					1-20	21-50	51-100	1-20	21-50	51-100			FIGURE NO.	ITEM NO.
PAOZZ	5960-00-1667663	ELECTRON TUBE V104..... 12AJ7 (81349)	EA	REF				*	*	*		*	32	V104
PAOZZ	5960-00-1667663	ELECTRON TUBE V301..... 12AJ7 (81349)	EA	REF				*	*	*		*	32	V301
PAOZZ	5960-00-1667663	ELECTRON TUBE V302..... 12AJ7 (81349)	EA	REF				*	*	*		*	32	V302
PAOZZ	5960-00-1667663	ELECTRON TUBE V305..... 12AJ7 (81349)	EA	REF				*	*	*		*	32	V305
PAOZZ	5960-00-1667663	ELECTRON TUBE V501..... 12AJ7 (81349)	EA	REF				*	*	*		*	32	V501
PAOZZ		ELECTRON TUBE V302..... 5726-6AL5W (81349)	EA	2				*	*	*		*	32	V302
PAOZZ		ELECTRON TUBE V602..... 5726-6AL5W (81349)	EA	REF				*	*	*		*	33	V602
PAOZZ		ELECTRON TUBE V105..... 6005-6AQ5W (81349)	EA	2				*	*	*		*	38	V105
PAOZZ	5960-00-6696861	ELECTRON TUBE V106..... 6005-6AQ5W (81349)	EA	REF				*	*	*		*	38	V106
PAHZZ		FILTER, LIGHT, CATHODE RAY TUBE G102.... 48003311 (18778)	EA	1				*	*	*	003			G102
PACZZ	5920-00-0504953	FUSE, CARTRIDGE F02G1R50A (81349)	EA	1				*	*	*	050	30		F601
PAHZZ		FUSEHOLDER M601..... 5M8134983 (80063) B/A	EA	1				*	*	*	003			H601
PAHZZ	5920-00-5431229	FUSEHOLDER XF6011..... 342007 (1799.5) BAA	EA	1				*	*	*	003			
PCHZZ	5325-00-2986844	GROMMET, RUBBER NO-REF-DESIG..... 22363 (76385) BUF	EA	1				*	*	*	004			
PCHZZ		GROMMET, RUBBER NO-REF-DESIG..... 2181-5 (76385) BAA	EA	2				*	*	*	004			
XBHZZ		GROMMET, RUBBER M101 SYN, FL 37/64 IN OD 3/32 IN THK, GROOVE 3/8 IN OD X 1/16 IN WD, 17/64 IN IO X 1/4 IN HO/A; 3000410 (00530) BUF	EA	1										H101
PCHZZ		GROMMET, RUBBER M102 SYN, R 0.675 IN... DIA X 3/32 IN THK, GROOVE 15/32 IN DIA X 1/16 IN WD, 3/8 IN IO X 1/4 IN HO/A; 38000420 (00530) BAA	EA	2				*	*	*				H102
PCHZZ		GROMMET, RUBBER H103 SYN, FL 0.675 IN... DIA X 3/32 IN THK, GROOVE 15/32 IN DIA X 1/16 IN WD, 3/8 IN IO X 1/4 IN HO/A; 38000420 (00530) BAA	EA	REF				*	*	*				H103
XDCZZ		K108 0102 RD, ARROW MARKING, 5/8 IN OD X 7/16 IN THK WA. 6126 (80375)	EA	1				*	*	*				O102
PACZZ	5355-00-5115728	5003371 (00530) BAA	EA	8				*	*	*				O103
PACZZ	5355-00-5115726	5003371 (00530) BAA	EA	REF				*	*	*				O104
PACZZ	5355-00-5115728	5003371 (00530) BAA	EA	REF				*	*	*				O105
PACZZ	5355-00-5115728	5003371 (00530) BAA	EA	REF				*	*	*				O106
PACZZ	5355-00-5115728	5603371 (00530) BAA	EA	REF				*	*	*				O107

SECTION II

TM11-6625-285-40P

(1) SHR CODE	(2) NATIONAL STOCK NUMBER	(3) DESCRIPTION REFERENCE NUMBER & MFR. CODE USABLE ON CODE	(4) UNIT OF MEAS.	(5) QTY INC IN UNIT	(6) 30-DAY DS MAINT ALLOWANCE			(7) 30-DAY GS MAINT ALLOWANCE			(8) 1-YR ALW PER 100 EQUIP CHYGCY	(9) DEPOT MAINT ALW PER 100 EQUIP	(10) ILLUSTRATION	
					(a)	(b)	(c)	(a)	(b)	(c)			(a)	(b)
					1-20	21-50	51-100	1-20	21-50	51-100			FIGURE NO.	ITEM NO.
		CONTINUED REG PORN10PCT, 1/2M RC20GF475K (81349)												
PAHZZ		RESISTOR, FIXED, COMPOSITION R524 12,000 PORM10PCT, 1W; RC32GF123K (81349)	EA	1				*	*	*	003	30	R524	
PAHZZ	5905-00-1069348	RESISTOR, FIXED, COMPOSITION R532 43,000 OHM PORM5PCT, 1W; RC32GF433J (81349)	EA	1				*	*	*	003	33	R532	
PAHZZ	5905-00-2992004	RESISTOR, FIXED, COMPOSITION R307 100,000 OHM PORM10PCT, 1W; RC32GF104K (81349)	EA	2				*	*	*	*	34	R307	
PAHZZ	5905-00-2992004	RESISTOR, FIXED, COMPOSITION R604 100,000 OHM PORM10PCT, 1W; RC32GF104K (81349)	EA	REF				*	*	*	*	30	R604	
PAHZZ		RESISTOR, FIXED, COMPOSITION R309 220,000 OHM PORM10PCT, 1W; RC32GF224K (81349)	EA	2				*	*	*	*	38	R309	
PAHZZ		RESISTOR, FIXED, COMPOSITION R406 220,000 OHM PORM10PCT, 1W; RC32GF224K (81349)	EA	REF				*	*	*	*	33	R406	
PAHZZ	5905-00-1114748	RESISTOR, FIXED, COMPOSITION R511 680,000 OHM PORM5PCT, 1W; RC32GF684J (81349)	EA	1				*	*	*	003	37	R511	
PAHZZ	5905-00-1116009	RESISTOR, FIXED, COMPOSITION R607 820,000 OHM PORM10PCT, 1W; RC32GF824J (81349)	EA	1				*	*	*	003	32	R607	
PAHZZ	5905-00-1956754	RESISTOR, FIXED, COMPOSITION R135 47,000 OHM PORM5PCT, 2W; RC42GF475J (81349)	EA	1				*	*	*	003	30	R135	
PAHZZ	5905-00-2547708	RESISTOR, FIXED, COMPOSITION X143 51,000 OHM PORM5PCT, 2W; RC42GF513J (81349)	EA	3				*	*	*	*	31	R143	
PAHZZ	5905-00-2547708	RESISTOR, FIXED, COMPOSITION R525 51,000 OHM PORM5PCT, 2W; RC42GF513J (81349)	EA	REF				*	*	*	*	30	R525	
PAHZZ	5905-00-2547708	RESISTOR, FIXED, COMPOSITION R527 51,000 OHM PORM5PCT, 2W; RC42GF513J (81349)	EA	REF				*	*	*	*	30	R527	
PAHZZ	5905-00-2547708	RESISTOR, FIXED, COMPOSITION R525 51,000 OHM PORM5PCT, 2W; RC42GF513J (81349)	EA	2				*	*	*	003	30	R525	
PAHZZ	5905-00-2547708	RESISTOR, FIXED, COMPOSITION R527 51,000 OHM PORM5PCT, 2W; RC42GF513J (81349)	EA	REF				*	*	*	*	30	R527	
PAHZZ	5905-00-2493663	RESISTOR, FIXED, COMPOSITION R318 68,000 OHM PORM5PCT, 2W; RC42GF683J (81349)	EA	1				*	*	*	003	38	R318	
PAHZZ	5905-00-2547101	RESISTOR, FIXED, COMPOSITION R143 100,000 OHM PORM5PCT, 2W; RC42GF104J (81349)	EA	2				*	*	*	003	31	R143	
PAHZZ	5905-00-2547101	RESISTOR, FIXED, COMPOSITION R313 100,000 OHM PORM5PCT, SW; RC42GF104J (81349)	EA	REF				*	*	*	*	37	R313	
PAHZZ	5905-00-2547101	RESISTOR, FIXED, COMPOSITION R324 100,000 OHM PORM5PCT, 2W; RC42GF104J (81349)	EA	1				*	*	*	003	37	R324	
PAHZZ		RESISTOR, FIXED, COMPOSITION R606 150,000 OHM PORM5PCT, 2W; RC42GF104J (81349)	EA	1				*	*	*	003	30	R606	
		CONTINUED												

SECTION II

TM11-6625-285-40P

(1) SMR CODE	(2) NATIONAL STOCK NUMBER	(3) DESCRIPTION REFERENCE NUMBER & MFR. CODE USABLE ON CODE	(4) UNIT OF MEAS.	(5) QTY INC IN UNIT	(6) 30-DAY DS MAINT ALLOWANCE			(7) 30-DAY GS MAINT ALLOWANCE			(8) 1-YR ALY PER 100 EQUIP CNTGCT	(9) DEPOT MAINT ALW PER 100 EQUIP	(10) ILLUSTRATION	
					(a)	(b)	(c)	(a)	(b)	(c)			(a)	(b)
					1-20	21-50	51-100	1-20	21-50	51-100			FIGURE NO.	ITEM NO.
		CONTINUED 000 OHM PORMSPCT, 1/2W; RC20GF684J (81349)												
PAHZZ	5905-00-2215848	RESISTOR, FIXED, COMPOSITION R607 820, 000 OHM PORMSPCT 1/2W; RC20GF824J (81349)	EA	1				*	*	*	003	32	R607	
PAHZZ	5905-00-1920390	RESISTOR, FIXED, COMPOSITION R123 1 WE6 PORMSPCT 1/2W; RC206F105J (81349)	EA	4				*	*	*		34	R123	
PAHZZ	5905-00-1920390	RESISTOR, FIXED, COMPOSITION R124 1 MEG PORMSPCT, 1/2W; RC20GF105J (81349)	EA	REF				*	*	*		34	R124	
PAHZZ	5905-00-1920390	RESISTOR, FIXED, COMPOSITION R302 1 MEG, PORMSPCT, 1/2W; RC20GF105J (81349)	EA	REF				*	*	*		36	R302	
PAHZZ	1905-00-1920390	RESISTOR, FIXED, COMPOSITION R322 1 MEG, PORMSPCT 1/2W; RC20GF105J (81349)	EA	REF				*	*	*		37	R322	
PAHZZ	5905-00-2791875	RESISTOR, FIXED, COMPOSITION R106 PORMSPCT, 1/2W; RC20GF205J (81349)	EA	MEG 2				*	*	*		38	R106	
PAHZZ	905-00-2791175	RESISTOR, FIXED, COMPOSITION R501 PORMSPCT, 1/2W; RC20GF205J (81349)	EA	REF				*	*	*		32	R501	
PAHZZ	5905-00-1908885	RESISTOR, FIXED, COMPOSITION R1EA HE6 PORMSPCT, 1/2W; RC20GF225J (81349)	EA	2.2 B				*	*	*		31	R141	
PAHZZ	5905-00-1908885	RESISTOR, FIXED, COMPOSITION R1EA HE6 PORMSPCT 1/2W; RC20GF225J (81349)	EA	2 REF				*	*	*		31	R142	
PAHZZ	5905-00-1908885	RESISTOR, FIXED, COMPOSITION R301EA MEG PORMSPCT, 1/2W; RC20GF225J (81349)	EA	2 REF				*	*	*		38	R301	
PAHZZ	5905-00-1908885	RESISTOR, FIXED, COMPOSITION R303EA MEG PORMSPCT, 1/2W; RC20GF225J (81349)	EA	2 REF				*	*	*		38	R303	
PAHZZ	5905-00-1908885	RESISTOR, FIXED, COMPOSITION R401EA MEG PORMSPCT, 1/2W; RC20GCF225J (81349)	EA	2 REF				*	*	*		33	R401	
PAHZZ	5905-00-1908885	RESISTOR, FIXED, COMPOSITION R513EA MEG PORMSPCT, 1/2W; RC20GF225J (81349)	EA	2 REF				*	*	*		33	R513	
PAHZZ	5905-00-1908885	RESISTOR, FIXED, COMPOSITION R530EA MEG PORMSPCT 1/2W; RC20GF225J (81349)	EA	2 REF				*	*	*		31	R530	
PAHZZ	5905-00-1908885	RESISTOR, FIXED, COMPOSITION R531 2.2... MEG PORMSPCT, 1/2W; RC20GF225J (81349)	EA	REF				*	*	*		31	R531	
PAHZZ		RESISTOR, FIXED, COMPOSITION R139 4.7... MEG PORM10PCT, 1/2W; RC20GF475K (81349)	EA	4				*	*	*		31	R139	
PAHZZ		RESISTOR, FIXED, COMPOSITION R140 4.7... MEG PORM10PCT, 1/2W; RC20GF475K (81349)	EA	REF				*	*	*		31	R140	
PAHZZ		RESISTOR, FIXED, COMPOSITION R528 4.7... MEG PORM10PCT, 1/2W; RC20GF475K (81349)	EA	REF				*	*	*		31	R528	
PAHZZ		RESISTOR, FIXED, COMPOSITION R529 4.7... CONTINUED	EA	REF				*	*	*		31	R529	

SECTION II

TM11-6625-285-40P

(1) SMR CODE	(2) NATIONAL STOCK NUMBER	(3) DESCRIPTION REFERENCE NUMBER & MFR. CODE USABLE ON CODE	(4) UNIT OF MEAS.	(5) QTY INC IN UNIT	(6) 30-DAY DS MAINT ALLOWANCE			(7) 30-DAY GS MAINT ALLOWANCE			(8) 1-YR ALW PER 100 EQUIP CNTGCT	(9) DEPOT MAINT ALW PER 100 EQUIP	(10) ILLUSTRATION	
					(a)	(b)	(c)	(a)	(b)	(c)			(a)	(b)
					1-20	21-50	51-100	1-20	21-50	51-100			FIGURE NO.	ITEM NO.
		CONTINUED												
PAHZ	5905-00-1712004	OHM PORMSPCT, 1/2W; RC20GF223J (81349) RESISTOR, FIXED, COMPOSITION R120 22,000	EA	REF				*	*	*		*	38 R120	
PAHZ	5905-00-1712004	OHM PORMSPCT, 1/2W; RC20GF223J (81349) RESISTOR, FIXED, COMPOSITION R122 22,000	EA	REF				*	*	*		*	38 R122	
PAHZ	5905-00-1712004	OHM PORMSPCT, 1/2W; RC20GF223J (81349) RESISTOR, FIXED, COMPOSITION R126 22,000	EA	REF				*	*	*		*	34 R126	
PAHZ	5905-00-1712004	OHM PORMSPCT, 1/2W; RC20GF223J (81349) RESISTOR, FIXED, COMPOSITION R127 22,000	EA	REF				*	*	*		*	34 R127	
PAHZ	5905-00-2793499	OHM PORMSPCT, 1/2W; RC20GF273J (81349) RESISTOR, FIXED, COMPOSITION R129 27,000	EA	1				*	*	*	003	*	34 R129	
PAHZ	5905-00-2549201	OHM PORMSPCT, 1/2W; RC20GF473J (81349) RESISTOR, FIXED, COMPOSITION R512 47,000	EA	2				*	*	*		*	33 R512	
PAHZ	5905-00-2549201	OHM PORMSPCT, 1/2W; RC20GF473J (81349) RESISTOR, FIXED, COMPOSITION R608 47,000	EA	REF				*	*	*		*	30 R608	
PAHZ	5905-00-2793495	OHM PORMSPCT, 1/2W; RC20GF753J (81349) RESISTOR, FIXED, COMPOSITION R410 75,000	EA	1				*	*	*	003	*	33 R410	
PAHZ	5905-00-1956761	OHM PORMSPCT, 1/2W; RC20GF104J (81349) RESISTOR, FIXED, COMPOSITION R311 100,...	EA	1				*	*	*	003	43-1	R311	
PAHZ	5905-00-1956761	OHM PORMSPCT, 1/2W; RC20GF104J (81349) RESISTOR, FIXED, COMPOSITION R307 100,...	EA	1				*	*	*	003	34	R307	
PAHZ	5905-00-2792522	OHM PORMSPCT, 1/2W; RC20GF154J (81349) RESISTOR, FIXED, COMPOSITION R519 150,...	EA	1				*	*	*	003	33	R519	
PAHZ	5905-00-1920667	OHM PORMSPCT, 1/2W; RC20GF224J (81349) RESISTOR, FIXED, COMPOSITION A107 220,...	EA	6				*	*	*		*	34 R107	
PAHZ	5905-00-1920667	OHM PORMSPCT, 1/2W; RC20GF224J (81349) RESISTOR, FIXED, COMPOSITION R108 220,...	EA	REF				*	*	*		*	34 R108	
PAHZ	5905-00-1920667	OHM PORMSPCT, 1/2W; RC20GF224J (81349) RESISTOR, FIXED, COMPOSITION A309 220,...	EA	REF				*	*	*		*	38 R309	
PAHZ	5905-00-1920667	OHM PORMSPCT, 1/2W; RC20GF224J (81349) RESISTOR, FIXED, COMPOSITION R320 220,...	EA	REF				*	*	*		*	43-1 R320	
PAHZ	5905-00-1920667	OHM PORMSPCT, 1/2W; RC20GF224J (81349) RESISTOR, FIXED, COMPOSITION R323 220,...	EA	REF				*	*	*		*	43-1 R323	
PAHZ	5905-00-1920667	OHM PORMSPCT, 1/2W; RC20GF224J (81349) RESISTOR, FIXED, COMPOSITION R502 220,...	EA	REF				*	*	*		*	43-1 R502	
PAHZ	5905-00-1908865	OHM PORMSPCT, 1/2W; RC20GF274J (81349) RESISTOR, FIXED, COMPOSITION R326 270,...	EA	1				*	*	*	003	38	R326	
PAHZ	5905-00-1145456	RESISTOR, FIXED, COMPOSITION R518 680,...	EA	1				*	*	*	003	33	R518	
		CONTINUED												

SECTION II

TM11-6625-285-40P

(1) SMR CODE	(2) NATIONAL STOCK NUMBER	(3) DESCRIPTION REFERENCE NUMBER & MFR CODE USABLE ON CODE	(4) UNIT OF MEAS	(5) QTY INC IN UNIT	(6) 30-DAY DS MAINT ALLOWANCE			(7) 30-DAY GS MAINT ALLOWANCE			(8) 1-YR ALW PER 100 EQUIP CHTGCY	(9) DEPOT MAINT ALW PER 100 EQUIP	(10) ILLUSTRATION	
					(a)	(b)	(c)	(a)	(b)	(c)			(a)	(b)
					1-20	21-50	51-100	1-20	21-50	51-100			FIGURE NO.	ITEM NO.
		CONTINUED												
PAHZZ	5905-00-1956453	OHM PORM10PCT, 1/2W; RC20GF472K (81349)												
PAHZZ	5905-00-1956453	RESISTOR, FIXED, COMPOSITION R130 5600.. OHM PORM5PCT, 1/2W; RC20GF462J (81349)	EA	3								34	R130	
PAHZZ	5905-00-1956453	RESISTOR, FIXED, COMPOSITION R131 5600.. OHM PORM5PCT, 1/2W; RC20GF562J (81349)	EA	REF								34	R131	
PAHZZ	5905-00-1956453	RESISTOR, FIXED, COMPOSITION R517 5600.. OHM PORM5PCT, 1/2W; RC20GF562J (81349)	EA	REF								37	R517	
PAHZZ	5905-00-1411165	RESISTOR, FIXED, COMPOSITION R507 6800.. OHM PORM5PCT, 1/2W; RC20GF682J (81349)	EA	1						003		33	R507	
PAHZZ	5905-00-1410600	RESISTOR, FIXED, COMPOSITION R125 8200.. OHM PORM5PCT, 1/2W; RC20GF822J (81349)	EA	2								34	R125	
PAHZZ	5905-00-1410600	RESISTOR, FIXED, COMPOSITION R305 8200.. OHM PORM5PCT, 1/2W; RC20GF822J (81349)	EA	REF								38	R305	
PAHZZ	5905-00-1858510	RESISTOR, FIXED, COMPOSITION R306 10,000 OHM PORM5PCT, 1/2W; RC20GF103J (81349)	EA	4								38	R306	
PAHZZ	5905-00-1858510	RESISTOR, FIXED, COMPOSITION R504 10,000 OHM PORM5PCT, 1/2W; RC20GF103J (81349)	EA	REF								33	R504	
PAHZZ	5905-00-1858510	RESISTOR, FIXED, COMPOSITION R520 10,000 OHM PORM5PCT, 1/2W; RC20GF103J (81349)	EA	REF								37	R520	
PAHZZ	5905-00-1858510	RESISTOR, FIXED, COMPOSITION R521 10,000 OHM PORM5PCT, 1/2W; RC20GF103J (81349)	EA	REF								37	R521	
PAHZZ	5905-00-1100993	RESISTOR, FIXED, COMPOSITION R115 12,000 OHM PORM5PCT, 1/2W; RC20GF123J (81349)	EA	2								34	R115	
PAHZZ	5905-00-1100993	RESISTOR, FIXED, COMPOSITION R117 12,000 OHM PORM5PCT, 1/2W; RC20GF123J (81349)	EA	REF								34	R117	
PAHZZ	5905-00-19068876	RESISTOR, FIXED, COMPOSITION R312 15,000 OHM PORM10PCT, 1/2W; RC20GF153K (81349)	EA	4								37	R312	
PAHZZ	5905-00-1908876	RESISTOR, FIXED, COMPOSITION R321 15,000 OHM PORM10PCT, 1/2W; RC20GF153K (81349)	EA	REF								33	R321	
PAHZZ	5905-00-1908876	RESISTOR, FIXED, COMPOSITION R325 15,000 OHM PORM10PCT, 1/2W; RC20GF153K (81349)	EA	REF								33	R325	
PAHZZ	5905-00-1908876	RESISTOR, FIXED, COMPOSITION R408 15,000 OHM PORM10PCT, 1/2W; RC20GF153K (81349)	EA	REF								30	R408	
PAHZZ	5905-00-1920649	RESISTOR, FIXED, COMPOSITION R317 20,000 OHM PORM5PCT, 1/2W; RC20GF203J (81349)	EA	1						003		37	R317	
PAHZZ	5905-00-1712004	RESISTOR, FIXED, COMPOSITION R118 22,000 OHM PORM5PCT, 1/2W; RC20GF223J (81349)	EA	6								43-2	R118	
PAHZZ	5905-00-1712004	RESISTOR, FIXED, COMPOSITION R119 22,000 OHM PORM5PCT, 1/2W; RC20GF223J (81349)	EA	REF								43-2	R119	
		CONTINUED												

SECTION II

TM11-6625-285-40P

(1) NMR CODE	(2) NATIONAL STOCK NUMBER	(3) DESCRIPTION REFERENCE NUMBER & MFR. CODE USABLE ON CODE		(4) UNIT OF MEAS	(5) QTY INC IN UNIT	(6) 30-DAY DS MAINT ALLOWANCE			(7) 30-DAY GS MAINT ALLOWANCE			(8) 1 YR ALW PER 100 EQUIP CHNGCT	(9) DEPOT MAINT ALW PER 100 EQUIP	(10) ILLUSTRATION		
						(a)	(b)	(c)	(a)	(b)	(c)			(a)	(b)	
						1-20	21-50	51-100	1-20	21-50	51-100			FIGURE NO	ITEM NO	
PAHZZ	5940-00-2692219	POST, BINDING 247B (83330)	J501..... BUF	EA	REF										43-1	J501
PAHZZ	5940-00-2692219	POST, BINDING 247B (83330)	J502..... BUF	EA	REF										43-1	J502
PAHZZ		REACTOR L601 8071 (30724) BAI	EA	1							002			32	L601
PAHZZ	5950-00-6485486	REACTOR L601 161-25R (76095) BAI	EA	1							002			32	L601
PAHZZ	5905-00-1114734	RESISTOR, FIXED, COMPOSITION PORMSPCT, 1/2W; RC20GF470J (81349)	R132 47 OHM	EA	7										30	R132
PAHZZ	5905-00-1114734	RESISTOR, FIXED, COMPOSITION PORMSPCT, 1/2W; RC20GF470J (81349)	R133 47 OHM	EA	REF										30	R133
PAHZZ	5905-00-1114734	RESISTOR, FIXED, COMPOSITION PORMSPCT, 1/2W; RC20GF470J (81349)	R134 47 OHM	EA	REF										30	R134
PAHZZ	5905-00-1114734	RESISTOR, FIXED, COMPOSITION PORMSPCT, 1/2W; RC20GF470J (81349)	R503 47 OHM	EA	REF										33	R503
PAHZZ	5905-00-1114734	RESISTOR, FIXED, COMPOSITION PORMSPCT, 1/2W; RC20GF470J (81349)	R522 47 OHM	EA	REF										30	R522
PAHZZ	5905-00-1114734	RESISTOR, FIXED, COMPOSITION PORMSPCT, 1/2W; RC20GF470J (81349)	R523 47 OHM	EA	REF										30	R523
PAHZZ	5905-00-1114734	RESISTOR, FIXED, COMPOSITION PORMSPCT, 1/2W; RC20GF470J (81349)	R516 47 OHM	EA	REF											R516
PAHZZ	5905-00-195688	RESISTOR, FIXED, COMPOSITION OHM PORMSPCT, 1/2W; RC20GF102J (81349)	R314 1 000	EA	2										37	R314
PAHZZ	5905-00-1956806	RESISTOR, FIXED, COMPOSITION OHM PORMSPCT, 1/2W; RC20GF102J (81349)	R509 1000..	EA	REF										33	R509
PAHZZ	5905-00-2791757	RESISTOR, FIXED, COMPOSITION OHM PORMSPCT, 1/2W; RC20GF152J (81349)	R114 1500..	EA	1							003			43-2	R114
PAHZZ	5905-00-1908881	RESISTOR, FIXED, COMPOSITION OHM PORMSPCT, 1/2W; RC20GF182J (81349)	R113 1800..	EA	4										34	R113
PAHZZ	5905-00-1908881	RESISTOR, FIXED, COMPOSITION OHM PORMSPCT, 1/2W; RC20GF182J (81349)	R304 1 800	EA	REF										43-1	R304
PAHZZ	5905-00-1908881	RESISTOR, FIXED, COMPOSITION OHM PORMSPCT, 1/2W; RC20GF182J (81349)	R310 1800..	EA	REF										43-1	R310
PAHZZ	5905-00-1908881	RESISTOR, FIXED, COMPOSITION OHM PORMSPCT, 1/2W; RC20GF182J (81349)	R515 1800..	EA	REF											R515
PAHZZ	5905-00-1410595	RESISTOR, FIXED, COMPOSITION OHM PORMSPCT, 1/2W; RC20GF472K (81349)	R109 4700..	EA	3										43-2	R109
PAHZZ	5905-00-1410595	RESISTOR, FIXED, COMPOSITION OHM PORMSPCT, 1/2W; RC20GF472K (81349)	R111 4700..	EA	REF										34	R111
PAHZZ	5905-00-1410595	RESISTOR, FIXED, COMPOSITION OHM PORMSPCT, 1/2W; RC20GF472K (81349)	R505 4700.. CONTINUED	EA	REF										33	R505

SECTION II

TM11-6625-285-40P

(1) SMB CODE	(2) NATIONAL STOCK NUMBER	(3) DESCRIPTION REFERENCE NUMBER & MFR CODE USABLE ON CODE	(4) UNIT OF MEAS	(5) QTY INC IN UNIT	(6) 30-DAY DS MAINT ALLOWANCE			(7) 30-DAY CS MAINT ALLOWANCE			(8) 1 YR ALW PER 100 EQUIP CHTCCT	(9) DEPOT MAINT ALW PER 100 EQUIP	(10) ILLUSTRATION	
					(a)	(b)	(c)	(a)	(b)	(c)			(a)	(b)
					1-20	21-50	51-100	1-20	21-50	51-100			FIGURE NO	ITEM NO
PAHZZ		LAMPHOLDER X1402..... 34004071 (00530).....	BAA	EA	1							005		
PAHZZ		LIGHT INDICATOR X1405..... LH40FA4 (81349).....	BUF	EA	1							005		
PAHZZ		LAMPHOLDER 1X1401..... 190202LM22XX0 (96906).....	BUF	EA	4									
PAHZZ		LAMPHOLDER X1402..... 190202LM22XX0 (96906).....	BUF	EA	REF									
PAHZZ		LAMPHOLDER X1403..... 190202LM22XX0 (96906).....	BUF	EA	REF									
PAHZZ		LAMPHOLDER X1404..... 190202LM22XX0 (96906).....	BUF	EA	REF									
PAOZZ	5340-00-6649238	OUNT, VIBRATION H105 SPHERICAL MTG, 5/8 IN LG X 19/32 IN DIA O/A; 175-1 (81860).....	BUF	EA	4									H105
PAOZZ	5340-00-6649238	OUNT, VIBRATION H106 SPHERICAL MTG, 5/8 IN LG X 19/32 IN DIA O/A; 175-1 (81860).....	BUF	EA	REF									H106
PAOZZ	5340-00-6649238	OUNT, VIBRATION H107 SPHERICAL MTG, 5/8 IN LG X 19/32 IN DIA O/A; 175-1 (81860).....	BUF	EA	REF									H107
PAOZZ	0-00-6649236	OUNT, VIBRATION H108 SPHERICAL MTG, 5/8 IN LG X 19/32 IN DIA O/A; 175-1 (81860).....	BUF	EA	REF									H108
PAHZZ		PLASTIC, HELIX D201 3 FT LG..... 7010900 (00530).....	BAA	EA	2							003		D101
PAHZZ	0-00-2692219	POST, BINDING J101..... DF30 (58474).....	BAA	EA	8								43-2	J101
PAHZZ	5940-00-2692219	POST, BINDING J102..... DF30 (58474).....	BAA	EA	REF								43-2	J102
PAHZZ	5940-00-2692219	POST, BINDING J103..... DF30 (58474).....	BAA	EA	REF								43-2	J103
PAHZZ	5940-00-2692219	POST, BINDING J301..... DF30 (58474).....	BAA	EA	REF								43-1	J301
PAHZZ	5940-00-2692219	POST, BINDING J302..... DF30 (58474).....	BAA	EA	REF								43-1	J302
PAHZZ	5940-00-2692219	POST, BINDING J401..... DF30 (58474).....	BAA	EA	REF								43-1	J401
PAHZZ		POST, BINDING J501..... DF30 (58747).....	BAA	EA	REF								43-1	J501
PAHZZ		POST, BINDING J502..... DF30 (58747).....	BAA	EA	REF								43-1	J502
PAHZZ	5940-00-2692219	POST, BINDING J101..... 2678 (83330).....	BUF	EA	8								43-2	J101
PAHZZ	5940-00-2692219	POST, BINDING J102..... 2678 (83330).....	BUF	EA	REF								43-2	J102
PAHZZ	5940-00-2692219	POST, BINDING J103..... 2678 (83330).....	BUF	EA	REF								43-2	J103
PAHZZ	5940-00-2692219	POST, BINDING J301..... 2678 (83330).....	BUF	EA	REF								43-1	J301
PAHZZ	5940-00-2692219	POST, BINDING J302..... 2678 (83330).....	BUF	EA	REF								43-1	J302
PAHZZ	5940-00-2692219	POST, BINDING J401..... 2678 (83330).....	BUF	EA	REF								43-1	J401

MC FORM 175

SECTION II

TM11-6625-285-40P

(1) SMO CODE	(2) NATIONAL STOCK NUMBER	(3) DESCRIPTION REFERENCE NUMBER & MFR. CODE USABLE ON CODE	(4) UNIT OF MEAS	(5) QTY IN UNIT	(6) 30-DAY DS MAINT ALLOWANCE			(7) 30-DAY GS MAINT ALLOWANCE			(8) 1-YR MAINT PER EQUIP CHNGCY	(9) DEPOT MAINT PER EQUIP	(10) ILLUSTRATION	
					(a) 1-20	(b) 21-50	(c) 51-100	(a) 1-20	(b) 21-50	(c) 51-100			(a) FIGURE NO.	(b) ITEM NO.
					UNIT	UNIT	UNIT	UNIT	UNIT	UNIT				
PACZZ	5355-00-5115728	0 1 0 8 BAA 6500371 (00530)	EA	REF										0108
PACZZ	5355-00-5111728	65003371 (00530) BAA	EA	REF										0109
PACZZ	5355-00-5115728	KNOB 0110 BAA 4500371 (00530)	EA	REF										0110
PACZZ	5355-00-5115728	KNOB 0103 BUF 4500371 (00530)	EA	12							003			0103
PACZZ	5355-00-5115728	KNOB 0104 BUF 45003371 (00530)	EA	REF										0104
PACZZ	5355-00-5115728	0 1 0 5 BUF 4500371 (00530)	EA	REF										0105
PACZZ	5355-00-5115728	KNOB 0106 BUF 45003371 (00530)	EA	REF										0106
PACZZ	5355-00-5115728	KNOB 0107 BUF 45003371 (00530)	EA	REF										0107
PACZZ	5355-00-5115728	KNOB 0108 BUF 45003371 (00530)	EA	REF										0108
PACZZ	5355-00-511572 BUF	EA	REF										0109
PACZZ	5355-00-5115728	KNOB 0110 BUF 45003371 (00530)	EA	REF										0110
PACZZ	5355-00-5115728	KNOB 0111 BUF 45003371 (00530)	EA	REF										0111
PACZZ	5355-00-5115728	KNOB 0112 BUF 45003371 (00530)	EA	REF										0112
PACZZ	5355-00-5115728	KNOB 0113 BUF 45003371 (00530)	EA	REF										0113
PACZZ	5355-00-5115728	KNOB 0114 BUF 45003371 (00530)	EA	REF										0114
PACZZ		KNOB 0111 RD, 1 IN DIA X 1/2 IN THK O/A; 45003451 (00530) BAA	EA	4										0111
PACZZ		KNOB 0112 RD, 1 IN DIA X 1/2 IN THK O/A; 45003451 (00530) BAA	EA	REF										0112
PACZZ		KNOB 0113 RD, 1 IN DIA X 1/2 IN THK O/A; 45003451 (00530) BAA	EA	REF										0113
PACZZ		KNOB 0114 RD, 1 IN DIA X 1/2 IN THK O/A; 45003451 (00530) BAA	EA	REF										0114
PACZZ	5355-00-1607108	KNOB 0101 RD W/POINTER. 27/32 IN LG X... 11/16 IN WD X 13/32 IN THK; O/A; 1400 (72512)	EA	1							003			0101
PACZZ	6240-00-57784566	LAMP, E 4 0 1 NE2 (08805)	EA	1							100			E401
PACZZ	16240-00-1558706	LAMP, INCANDESCENT 1401 47 (96906) BAA	EA	5									33	I401
PACZZ	6240-00-1558706	LAMP, INCANDESCENT 1402 47 (96906)	EA	REF									33	I402
PACZZ	6240-00-1558706	LAMP, INCANDESCENT 1403 47 (96906)	EA	REF									38	I403
PACZZ	6240-00-1558706	LAMP, INCANDESCENT 1404 47 (96906)	EA	REF									38	I404
PACZZ	6240-00-1558706	LAMP, INCANDESCENT 1405 47 (96906)	EA	REF									32	I405

SECTION II

TM11-6625-285-40P

(1) SMR CODE	(2) NATIONAL STOCK	(3) DESCRIPTION REFERENCE NUMBER & MFR CODE USABLE ON CODE	(4) UNIT OF MEAS	(5) QTY INC IN UNIT	(6) 30-DAY DS MAINT ALLOWANCE			(7) 30-DAY GS MAINT ALLOWANCE			(8) 1-YR ALW PER 100 EQUIP CNTGCT	(9) DEPOT MAINT ALW PER 100 EQUIP	(10) ILLUSTRATION	
					(a)	(b)	(c)	(a)	(b)	(c)			(a)	(b)
					1-20	21-50	51-100	1-20	21-50	51-100			FIGURE NO	ITEM NO
		CONTINUED												
PAHZZ	5905-00-2791921	RESISTOR, FIXED, COMPOSITION R603 270, 000 OHM PORMSPCT, 2W; RC42GF154K (81349)	EA	1		*	*	*		003	32	R603		
PAHZZ	5905-00-2792300	RESISTOR, FIXED, COMPOSITION R404 560, 000 OHM PORMSPCT, 2W; RC42GF5664J (81349)	EA	1		*	*	*		003	33	R404		
PAHZZ		RESISTOR, FIXED, COMPOSITION R105 10 NE PORM10PCT, 2W; RV42GF106K (81349)	EA	1		*	*	*		003	30	R605		
PAHZZ	5905-00-552352	RESISTOR, FIXED, FILM R103 2000 OHM PORM10PCT, 1/2W; RNT0B2001F (81349)	EA	1		*	*	*		003	32	R103		
PAHZZ		RESISTOR, FIXED, FILM R102 20,400 OHM PORM10PCT, 1/2W; RN70B2042F (81349)	EA	1		*	*	*		003	32	R102		
PAHZZ		RESISTOR, FIXED, FILM R101 250,000 OHM PORM10PCT, 1/2W; RN70B2503F (81349)	EA	1		*	*	*		003	32	R101		
PAHZZ	5905-00-5390802	RESISTOR, FIXED, FILM R104 2 NEG PORM10PCT, 1/2W; RN70B2004F (81349)	EA	2		*	*	*		*	34	R104		
PAHZZ	5905-00-5390802	RESISTOR, FIXED, FILM R105 2 MEG PORM10PCT, 1/2W; RN70B2004F (81349)	EA	REF		*	*	*		*	38	R105		
PAHZZ	5905-00-2843609	RESISTOR, FIXED, WIRE WOUND R601 10,000 OHM PORMSPCT 17W; RW32V103 (81349)	EA	1		*	*	*		003	30	R601		
PAHZZ		RESISTOR, FIXED, WIRE WOUND R137 25,000 OHM PORMSPCT 11W; RW29V253 (81349)	EA	2		*	*	*		*	30	R137		
PAHZZ		RESISTOR, FIXED, WIRE WOUND R138 25,000 OHM PORMSPCT, 11W; RW29V253 (81349)	EA	REF		*	*	*		*	30	R138		
PAOZZ	5905-00-2799812	RESISTOR, THERMAL RT601 3-14 (70563)	EA	1		*	*	*		003				
PAHZZ	5905-00-6824114	RESISTOR, VARIABLE R411 6 OHM PORMSPCT, 2W; RA20NBSA6ROA (81349)	EA	1		*	*	*		003	32	R411		
PAHZZ		RESISTOR, VARIABLE R508 1000 OHM PORM20PCT, 1W; RV2NAXSB102B (81349)	EA	1		*	*	*		003	33	R508		
PAHZZ	5905-00-5782551	RESISTOR, VARIABLE R144 1000 OHM PORM10PCT, 2W; R420NASD102A (81349)	EA	2		*	*	*		*	34	R144		
PAHZZ	5905-00-5782551	RESISTOR, VARIABLE R602 1000 OHM PORM10PCT, 2W; R420NASD102A (81349)	EA	REF		*	*	*		*	35	R602		
PAHZZ		RESISTOR, VARIABLE R116 1200 OHM PORM10PCT, 2W; RV2NAXS01228 (81349)	EA	1		*	*	*		003	38	R116		
PAHZZ	5905-00-6655304	RESISTOR, VARIABLE R121 2000 OHM PORM10PCT; RV2NAXPB202B (81349)	EA	1		*	*	*		003	36	R121		
PAHZZ	5905-00-6655303	RESISTOR, VARIABLE PORM10PCT; NT053500 (00530)	EA	1		*	*	*		003	32	R110		

ANC FORM 1794-6 APR 70-TEST

SECTION II

TM11-6625-205-40P

(1) SMR CODE	(2) NATIONAL ----- REFERENCE NUMBER & MFR. CODE USABLE ON CODE	(3) DESCRIPTION	(4) UNIT OF MEAS	(5) QTY INC IN UNIT	(6) 30-DAY GS MAINT ALLOWANCE			(7) 30-DAY SS MAINT ALLOWANCE			(8) 1-YR ALW PER 100 EQUIP CNTGCT	(9) DEPOT MAINT ALW PER 100 EQUIP	(10) ILLUSTRATION	
					(a)	(b)	(c)	(a)	(b)	(c)			(a)	(b)
					1-20	21-50	51-100	1-20	21-50	51-100			FIGURE NO.	ITEM NO.
PAHZZ	5905-00-684139	RESISTOR, VARIABLE R315 2000 OHM.....	EA	1				*	*	*	003	34	R315	
PAHZZ	5905-00-242768	RESISTOR, VARIABLE R533 3000 OHM..... PORM10PCT, 2W; RA20NASAS302A (81349)	EA	1				*	*	*	003	33	R533	
PAHZZ	5905-00-66553	RESISTOR, VARIABLE R506 10,000 OHM..... PORM20PCT NO1053510 (00530)	EA	1				*	*	*	003	32	R506	
PAHZZ		RESISTOR, VARIABLE R510 10,000 OHM..... PORM20PCT, 1W; RV2NAXSD1038 (81349)	EA	1				*	*	*	003	33	R510	
PAHZZ	5905-00-5027256	RESISTOR, VARIABLE R112 25,000 OHM..... PORM20PCT, 1W; 35 (11237)	EA	2				*	*	*	003	32	R112	
PAHZZ	5905-00-5027256	RESISTOR, VARIABLE R514 25,000 OHM..... PORM20PCT, 1W; 35 (11237)	EA	REF				*	*	*	*	32	R514	
PAHZZ		RESISTOR, VARIABLE R526 25,000 OHM..... PORM20PCT 2W; RV2NAXSB2538 (81349)	EA	1				*	*	*	003	30	R526	
PAHZZ		RESISTOR, VARIABLE R128 50,000 OHM..... PORM20PCT, 1W; RV2NACS85038 (81349) BAA	EA	3				*	*	*	*	34	R128	
PAHZZ		RESISTOR, VARIABLE R319 50,000 OHM..... PORM20PCT, 1W; RV2NAVCS85038 (81349) BUP	EA	REF				*	*	*	*	36	R319	
PAHZZ		RESISTOR, VARIABLE R403 50,000 OHM..... PORKZOPCT, 1W; RV2NACS503B (81349) BUP	EA	REF				*	*	*	*	35	R403	
PAHZZ	5905-00-5428744	RESISTOR, VARIABLE R126 50,000 OHM..... PORM10PCT, 2W; RV4NATCK503A (81349) BAA	EA	4				*	*	*	*	36	R128	
PAHZZ	5905-00-542844	RESISTOR, VARIABLE R319 50,000 OHM..... PORM10PCT, 2W; RV4NATFK50.3 (81349)	EA	REF				*	*	*	*	36	R319	
PAHZZ	5905-00-5428744	RESISTOR, VARIABLE R403 50,000 OHM..... PORM10PCT, 2W; RV4NATFK503A (81349)	EA	REF				*	*	*	*	35	R403	
PAHZZ	5905-00-5428744	RESISTOR, VARIABLE R407 50,000 OHM..... PORM10PCT, 2W; RV4NATFK503A (81349)	EA	REF				*	*	*	*	38	R407	
PAHZZ		RESISTOR, VARIABLE R136 100,000 OHM..... PORM20PCT 1W; RV2NAKSB104B (81349)	EA	2				*	*	*	*	33	R136	
PAHZZ		RESISTOR, VARIABLE R409 100,000 OHM..... PORM20PCT 1W; RV2NAXSB104B (81349)	EA	REF				*	*	*	*	36	R409	
PAHZZ		RESISTOR, VARIABLE R308 200,000 OHM..... PORM20PCT; 35 (11237)	EA	1				*	*	*	003	33	R308	
PAHZZ		RESISTOR, VARIABLE R405 200,000 OHM..... PORM10PCT, 2W; 53CL200KSHVC (12697) BAA	EA	1				*	*	*	003	33	R405	
PAHZZ	5905-00-5525476	RESISTOR, VARIABLE R405 250,000 OHM..... PORM10PCT, 2W; RV4ATP0254A (81349) BAA	EA	1				*	*	*	003	33	R405	
PAHZZ		RESISTOR, VARIABLE R316 250,000 OHM..... CONTINUED	EA	1				*	*	*	003	33	R316	

SECTION II

TM11-6625-285-40P

(1) SMP CODE	(2) NATIONAL STOCK NUMBER	(3) DESCRIPTION REFERENCE NUMBER & MFR CODE CONTINUED	(4) UNIT OF MEAS	(5) QTY IN UNIT	(6) 30-DAY DS MAINT ALLOWANCE			(7) 30-DAY CS MAINT ALLOWANCE			(8) 1-YR ALW PER 100 EQUIP CHNGCY	(9) DEPOT MAINT ALW PER 100 EQUIP	(10) ILLUSTRATION	
					(a)	(b)	(c)	(a)	(b)	(c)			(a)	(b)
					1-20	21-50	51-100	1-20	21-50	51-100			FIGURE NO	ITEM NO
		PORNOZPCT, 1W; RV2NAXSD254B (81349)												
	5960-00-2560577	RETAINER, ELECTRON TUBE 8517 (71785)	AL01	1							003		A101	
PAHZZ		RETAINER, ELECTRON TUBE 37007071 F005301	AL01	1							003		A101	
PAHZZ	5960-00-7574403	RETAINER, ELECTRON TUBE 18550 (71785)	AL01	1							003		A101	
DOZZ		SCALE, CATHODE RAY TUBE C2449 (24018)	GL01	1									G101	
PAQZZ		SCALE, CATHODE RAY TUBE 45003801 (18778)	GL01	1							003		G101	
PAHZZ	5960-00-5667024	SHIELD, ELECTRON TUBE NO-REF-DESIG 42001952 (00530)		1							010			
PAHZZ	5935-00-8928987	SOCKET, ELECTRON TUBE X101 TS103P03 (81349)		10								30	X101	
PAHZZ	5935-00-8928987	SOCKET, ELECTRON TUBE X102 TS103P03 (81349)		REF								30	X102	
PAHZZ	5935-00-8928987	SOCKET, ELECTRON TUBE X103 TS103P03 (81349)		REF								30	X103	
PAHZZ	5935-00-8928987	SOCKET, ELECTRON TUBE X104 TS103P03 (81349)		REF									X104	
PAHZZ	5935-00-8928987	SOCKET, ELECTRON TUBE X301 TS103P03 (81349)		REF								30	X301	
PAHZZ	5935-00-8928987	SOCKET, ELECTRON TUBE X304 TS103P03 (81349)		REF									X304	
PAHZZ	5935-00-8928987	SOCKET, ELECTRON TUBE X305 TS103P03 (81349)		REF									X305	
PAHZZ	5935-00-8928987	SOCKET, ELECTRON TUBE X501 TS103P03 (81349)		REF									X501	
PAHZZ	5935-00-8928987	SOCKET, ELECTRON TUBE X603 TS103P03 (81349)		REF								30	X603	
PAHZZ	5935-00-8928987	SOCKET, ELECTRON TUBE X604 TS103P03 (81349)		REF								30	X604	
PAHZZ	5935-00-237444	SOCKET, ELECTRON TUBE X401 9463-14 (71785)		1							003	30	X401	
PAHZZ	5935-00-9352231	SOCKET, ELECTRON TUBE X303 TS101P01 (81349)		3									X303	
PAHZZ	5935-00-9352231	SOCKET, ELECTRON TUBE X605 TS101P01 (81349)		REF								32	X605	
PAHZZ	5935-00-9352231	SOCKET, ELECTRON TUBE X606 TS101P01 (81349)		REF								32	X606	
PAHZZ		SOCKET, ELECTRON TUBE X105 TS102P03 (81349)		7								30	X105	
PAHZZ		SOCKET, ELECTRON TUBE X106 TS102P03 (81349)		REF								30	X106	
PAHZZ		SOCKET, ELECTRON TUBE X302 TS102P03 (81349)		REF									X302	
PAHZZ		SOCKET, ELECTRON TUBE X502 TS102P03 (81349)		REF									X502	
PAHZZ		SOCKET, ELECTRON TUBE X503 TS102P03 (81349)		REF								30	X503	

SECTION II

TM11-6625-285-40P

SU CODE	NATIONAL STOCK NUMBER	DESCRIPTION REFERENCE NUMBER & MFR. CODE USABLE ON CODE	QUANTITY BY UNIT	UNIT OF MEAS	30-DAY QUANTITY ALLOWANCE			30-DAY QUANTITY ALLOWANCE			1-YR ALY PER 100 EQUIP CITYCY	REPORT ALY PER 100 EQUIP	ILLUSTRATION	
					(a)	(b)	(c)	(a)	(b)	(c)			(a)	(b)
					1-20	21-30	31-100	1-20	21-30	31-100			FIGURE NO.	ITEM NO.
AMZZ		SOCKET, ELECTRON TUBE X601..... 7S102P03 (81349)		EA	REF								30	X601
AMZZ		SOCKET, ELECTRON TUBE X602..... 7S102P03 (81349)		EA	REF								32	X602
AMZZ	5930-00-5012419	SWITCH, Push S102 175 (76854)	1	EA							005		30	S102
AMZZ		SWITCH, ROTARY S310.....	1	EA							005		32	S101
AMZZ		SWITCH, ROTARY S101..... 01765-1 (24018) BUF	1	EA							005		32	S101
AMZZ	5930-00-5068400	SWITCH, ROTARY S301..... 152212M1 (76854) BAA	1	EA							005		30	S301
AMZZ		SWITCH, ROTARY S301..... 01763-1 (91620) BUF	1	EA							005		30	S301
AMZZ	5930-00-6662166	SWITCH, ROTARY S302..... 01096QB2 (76854)	1	EA							005		32	S302
AMZZ		SWITCH, ROTARY S302..... 01786-1 (24018) BUF	1	EA							005		32	S302
AMZZ	5930-00-5068399	SWITCH, ROTARY S501..... 01909QM2 (76854) BAA	1	EA							005		32	S501
AMZZ	5930-00-2404169	SWITCH, SLIDE S601..... 553 (78488) BAA	1	EA							005		30	S601
AMZZ		SWITCH, 5601..... ST92N BAA	1	EA							005		30	S601
AMZZ	5930-00-5098431	TRANSFORMER, POWER STEP-DOWN AND STEP-UP T601 206092 (00530)	1	EA							003		32	T601
AMZZ	5950-00-6823717	TRANSFORMER, POWER, STEP-DOW AND STEP-UP T602 JPT950 (30724)	1	EA							003		32	T601
AMZZ	5935-00-6367145	CONNECTOR, PLUG, ELECTRICAL NO-REF-DESIG...		EA										

INDEX - NATIONAL STOCK NUMBER AND REFERENCE NUMBER					
CROSS-REFERENCE TO FIGURE AND ITEM NUMBER					
NOTE: LATEST FEDERAL STOCK NUMBER ASSIGNMENTS ARE INCLUDED AT END OF INDEX					
STOCK NUMBER	FIGURE NO.	ITEM NO.	STOCK NUMBER	FIGURE NO.	ITEM NO.
5325-00-2986644					
5340-00-6649238		H105			
5340-00-6649238		H106			
5340-00-6649238		H107			
5340-00-6649238		H108			
5355-00-1607108		0101			
5355-00-5115728		0103	5905-30-2547101		R143
5355-00-5115723		0104	5905-00-2547101	31	R313
5355-00-5115728		0105	5905-00-2547101	37	R324
5355-00-5115729		0106	5905-00-2547708	30	R525
5355-00-5115728		0107	5905-00-2547708		R527
5355-00-5115728		0108	5905-00-2547708	31	R143
5355-00-5115728		0109	5905-00-2549201	30	R608
5355-00-5115728		0110	5905-00-2549201		R512
5355-00-5115728		0111	5905-00-2791757	43-2	R114
5355-00-5115728		0112	5905-00-2791875	32	R501
5355-00-5115728		0113	5905-00-2791875	38	R106
5355-00-5115728		0114	5905-00-2791921	32	R603
			5905-00-2792300	33	R404
			5905-00-2792522	33	R519
			5905-00-2793495	33	R410
			5905-00-2793499	34	R129
5905-00-1712004	34	R126			
5905-00-1712004		R127			
5905-00-1712004	38	R120			
5905-00-1712004		R122	5905-00-2799812		
5905-00-1712004	43-2:	R118	5905-00-2843609	30	R601
5905-00-1712004	43-2	R119			
5905-00-1858510	33	R504			
5905-00-1858510	37	R520	5905-00-2992004		R604
5905-00-1858510	37	R521	5905-00-2992004	34	R307
5905-00-1858510	38	R306	5905-00-5027256	32	R112
5905-00-1908865		R326	5905-00-5027256		R514
5905-00-1908876	30	R408	5905-00-5390802	34	R104
5905-00-1908876		R321	5905-00-5390002		R105
5905-00-1908876	33	R325	5905-00-5523521	32	R103
5905-00-1908876	37	R312	5905-00-5525476	33	R405
5905-00-1908881		R515	590-00-5782551	34	R144
5905-00-1908881	34	R113	5905-00-5782551	35	R602
5905-00-1908881	43-1	R304	5905-00-6655302		R506
5905-00-1908881	43-1	R310	5905-00-6655303	32	R110
5905-00-1908885		R141	5905-00-6655304		R121
5905-00-1908885	31	R142	5905-00-6824114	32	R411
5905-00-1908885		R530	5905-00-6824139	34	R315
5905-00-1908885	31	R531	5910-00-1127260	32	C311
5905-00-1908885		R101	5910-00-1958701	32	C606
5905-00-1908885	33	R513			
5905-00-1908885		R301			
5995-00-1908885	38	R303			
5905-00-1920390	34	R123	5910-00-5078225	30	C112
5905-00-1920390		R124	5910-00-5078225		C113
5905-00-1920390	37	R322	5910-00-5078225	30	C513
5905-00-1920390	38	R302	5910-00-5078225	30	C514
5905-00-1920649			5910-00-5430833		C102
5905-00-1920667	34	R107	5910-00-5430833	32	C104
5905-00-1920667		R108	5910-00-5430833	32	C106
5905-00-1920667	38	R309	5910-00-5430833		C502
5905-00-1920667	43-1	R320	5910-00-5430833	35	C313
5905-00-1920667	43-1	R323	5910-00-5439081		C302
5905-00-1920667	43-1	R502	5910-00-6665571	33	C312
			5910-00-6665571		C505
			5910-00-6665571	37	C309
			5910-00-6668886	30	C401
5905-00-1956453	34	R130	5910-00-6823684		C601
5905-00-1956453		R131	5910-00-6887312	30	C402
5905-00-1956453	37	R517	5910-00-7211994		C603
5905-00-1956754	30	R133	5910-00-7211994	32	C604
5905-00-1956761	34	R307	5910-00-7211994	32	C605
5905-00-1956761	43-1	R311	5910-00-8360406		C110
5905-00-1956806	33	R509	5910-00-8360406	31	C111
5905-00-1956806	37	R314	5910-00-8360406	31	C510
5905-00-2215848		R607	5910-00-8360406		C511
5905-00-2427683	33	R533	5910-00-8360406	32	C101
5905-00-2493663	38	R318	5910-00-8360406	32	C501

SECTION IV

TM11-6625-285-40P

FIGURE NO.	ITEM NO.	STOCK NUMBER	FIGURE NO.	ITEM NO.
		5910-00-8476791		
		5910-00-8813400		
32	C310	5950-00-5098431		7601
32	C603	5950-00-6485486	32	L601
	C604	5950-00-6823717	32	T601
	C605	5960-00-1080257		V303
30	F601	5960-00-1667663	32	V101
		5960-00-1667663		V102
		5960-00-1667663		v103
30	S601	5960-00-1667663	32	v104
	S102	5960-00-1667663	32	V301
32	S501	5960-00-1667663	32	V304
38	S301	5960-00-1667663	32	V305
32	S302	5960-00-1667663	32	V501
		5960-00-2560577		A101
		5960-00-2620160	32	V502
		5960-00-2620160	37	v503
		5960-00-2620218	43	V605
		5960-00-2960517	43	V401
		5960-00-5431921	38	V603
		5960-00-5431921	38	V604
		5960-00-5867024		
	X401	5960-00-6244718	37	V601
		5960-00-6696861	38	V105
	X104	5960-00-6696861	38	V106
	X304	5960-00-7574403		A101
	X305	5975-00-2730788		
	X501	6145-00-5001726		
	X603	6145-00-5426092		
	X604	6145-00-5481258		
30	X101	6240-00-1558706	32	1405
38	X102	6240-00-1558706	33	1401
38	X103	6240-00-1558706	33	1402
38	X103	6240-00-1558706	38	1403
38	X103	6240-00-1558706	38	1404
43-1	X301	6240-00-5778456		E401
43-1	J301	6025-00-5219061		D101
43-1	J302			
43-1	J401			
43-1	J501			
43-1	J502			
43-2	J101			
43-2	J102			
43-2	J103			

REFERENCE NO.	MFR CODE	FIG. NO.	ITEM NO.	REFERENCE NO.	MFR CODE	FIG. NO.	ITEM NO.
B1783-1	91820	38	S301	CO-02MGF2-18-0310	81349		
B1785-1	24018	32	S101	CO-03MGF3-18-0330	81349		
B1786-1	24018	32	S302	C 2449	24018		G101
CC20AH050C	81349	30	C112	C 2450	91820		
CC20AH050C	81349	30	C113	C2480-1	91820		W101
CC20AK1R5D	81349	30	C513	DF30	58474	43-1	J301
CC20AK1R5D	81349	30	C514	DF30	58474	43-1	J302
CE63F040R	81349	30	C607	DF30	58474	43-1	J401
CK63V103 Z	81349	30	C404	DF30	58474	43-2	J101
CK63V103 Z	81349	34	C108	DF30	58474	43-2	J102
CK63V103 Z	81349	34	C109	DF30	58474	43-2	J103
CK63V103 Z	81349	38	C301	DF30	58747	43-1	J501
CM20B151 K	81349	32	C306	DF30	58747	43-1	J502
CM20C101 K	81349	32	C503	F02GIR50A	81349	30	F601
CM20C101 K	81349	33	C314	JP7950	30724	32	T601
CM20C101 K	81349	33	C512	LH40FA4	81349		
CM20C620 JP3	81349	32	C103	MPTK2-1	83129	30	C403
CM30E102 J	81349	32	C105	MS90282LH22XXO	96906		
CM30E102 J	81349	32	C307	NE2	08805		E401
CM35E682 JP3	81349	32	C107	NO1053500	00530	32	R110
CM35E682 JP3	81349	32	C308	NO1053510	00530	32	R506
CP05A1 EC474 H	81349	34	C303	PLM20P5	83129	32	C603
CP05A1 EC474 H	81349	34	C304	PLM20P5	83129	32	C604
CP05A1 EC474 H	81349	34	C305	PLM20P5	83129	32	C605
CP05A1 EF473 H	81349	34	C302	P83709	56289	30	C401
CP05A1 EG104 K	81349	31	C110	RA20NA202A	81349	34	R315
CP05A1 EG104 K	81349	31	C111	RA20NASA302A	81349	33	R533
CP05A1 EG104 K	81349	31	C510	RA20NASA102A	81349	34	R144
CP05A1 EG104 K	81349	31	C511	RA20NASD102A	81349	35	R602
CP05A1 EG104 K	81349	32	C101	RA20NSA6ROA	81349	32	R411
CP05A1 EG104 K	81349	32	C501	RC20GF102J	81349	33	R509
CP53B1 EF203 K	81349	32	C602	RC20GF102J	81349	37	R314
CP53B4 EF504 V	81349	32	C311	RC20GF103J	81349	33	R504
CV11A120	81349	32	C102	RC20GF103J	81349	37	R520
CV11A120	81349	32	C104	RC20GF103J	81349	37	R521
CV11A120	81349	32	C106	RC20GF103J	81349	38	R306
CV11A120	81349	32	C502	RC20GF104J	81349	34	R307
CV11A120	81349	35	C313	RC20GF104J	31349	43-1	R311

SECTION IV

TM11-6625-285-40P

REFERENCE NO.	MFR CODE	FIG. NO.	ITEM NO.	REFERENCE NO.	MFR CODE	FIG. NO.	ITEM NO.
RC20GF105J	81349	34	R123	RC42GF473J	81349	30	R135
RC20GF105J	81349	34	R124	RC42GF513J	81349	30	R525
RC20GF105J	81349	37	R322	RC42GF513J	81349	30	R527
RC20GF105J	81349	38	R302	RC42GF513J	81349	31	R143
RC20GF123J	81349	34	R115	RC42GF564J	81349	33	R404
RC20GF123J	81349	34	R117	RC42GF683J	81349	38	R318
RC20GF152J	81349	43-2	R114	RC58CU	81349		
RC20GF153K	81349	30	R408	RN7082001F	81349	32	R103
RC20GF153K	81349	33	R321	RN7082004F	81349	34	R104
RC20GF153K	81349	33	R325	RN7002004F	81349	38	R105
RC20GF153K	81349	37	R312	RN70B2042F	81349	32	R102
RC20GF154J	81349	33	R519	RN7082503F	81349		R101
RC20GF182J	81349		R515	RTMASP380	80131	30	C112
RC20GF182J	81349	34	R113	RTMASP380	80131	30	C113
RC20GF182J	81349	43-1	R304	RTMASP380	80131	30	C513
RC20GF182J	81349	43-1	R310	RTMASP380	80131	30	C514
RC20GF203J	81349	37	R317	RV2NAC58503B	81349	34	R128
RC20GF205J	81349	32	R501	RV2NAC58503B	81349	35	R403
RC20GF205J	81349	38	R106	RV2NAC58503B	81349	36	R319
RC20GF223J	31349	34	R126	RV2NAXPB202B	81349	36	R121
RC20GF223J	81349	34	R127	RV2NAXSB102B	81349	33	R508
RC20GF223J	81349	38	R120	RV2NAXSB104B	81349	33	R136
RC20GF223J	81349	38	R122	RV2NAXSB104B	81349	36	R409
RC20GF223J	81349	43-2	R118	RV2NAXSB253B	81349	30	R526
RC20GF223J	81349	43-2	R119	RV2NAXSD103B	81349	33	R110
RC20GF224J	81349	34	R107	RV2NAXSD122B	81349	38	R116
RC20GF224J	81349	34	R103	RV2NAXSD254B	81349	33	R316
RC20GF224J	81349	38	R309	RV4ATFD254A	81349		R405
RC20GF224J	81349	43-1	R320	RV4NATFK503A	81349	35	R403
RC20GF224J	81349	43-1	R323	RV4NATFK503A	81349	36	R128
RC20GF224J	81349	43-1	R502	RV4NATFK503A	81349	36	R319
RC20GF225J	81349	31	R141	RV4NATFK503A	81349	38	R407
RC20GF225J	81349	31	R142	RW29V253	81349	30	R137
RC20GF225J	81349	31	R530	RW29V253	81349	30	R138
RC20GF225J	81349	31	R531	RW32V103	81349	30	R601
RC20GF225J	81349	33	R401	SMB134983	BOO63		H601
RC20GF225J	81349	33	R513	SR6P	28520		
RC20GF225J	81349	38	R301	SS3	78488	30	S601
RC20GF225J	81349	38	R303	ST52N	81349	30	S601
RC20GF273J	81349	34	R129	TD25-50	83125	33	C312
RC20GF274J	81349	38	R326	TD25-50	83125	33	C505
RC20GF470J	81349		R516	TD25-50	83125	37	C309
RC20GF470J	81349	30	R132	TM80-450	83125	32	C601
RC20GF470J	81349	30	R133	TS101P01	81349		X303
RC20GF470J	81349	30	R134	TS101P01	81349	32	X605
RC20GF470J	81349	30	R522	TS101P01	81349	32	X606
RC20GF70J	81349	30	R523	TS102P03	81349		X302
RC20GF470J	81349	33	R503	TS102P03	81349		X502
RC20GF472K	81349	33	R505	TS102P03	81349	30	X105
RC20GF472K	81349	34	R111	TS102P03	81349	30	X106
RC20GF472K	81349	43-2	R109	TS102P03	81349	30	X503
RC20GF473J	81349	30	R608	TS102P03	81349	30	X601
RC20GF473J	81349	33	R512	TS102P03	81349	32	X602
RC20GF475K	81349	31	R139	TS103P03	81349		X104
RC20GF475K	81349	31	R140	TS103P03	81349		X304
RC20GF475K	81349	31	R528	TS103P03	81349		X501
RC20GF475K	81349	31	R529	TS103P03	81349	30	X603
RC20GF562J	81349	34	R130	TS103P03	81349	30	X604
RC20GF562J	81349	34	R131	TS103P03	81349	38	X101
RC20GF562J	81349	37	R517	TS103P03	81349	33	X102
RC20GF682J	81349	33	R507	TS103P03	81349	38	X103
RC20GF684J	81349	33	R518	TS103P03	81349	33	X301
RC20GF753J	81349	33	R410	TS103P03	81359		X305
RC20GF822J	81349	34	R125	TVA1306	56289	33	C312
RC20GF322J	81349	38	R305	TVA1306	56289	33	C505
RC20GF824J	81349	32	R607	TVA1306	56289	37	C309
RC32GF104U	81349	30	R604	UP111145	21226	32	C606
RC32GF104K	81349	34	R307	UP121M	81349		
RC32GF123K	81349	30	R524	XPX24B	18876	30	C401
RC32GF224K	81349	33	R406	XT104A	14655	32	C603
RC32GF224K	81349	38	R309	XT104A	14655	32	C604
RC32GF433J	81349	33	R532	XT104A	14655	32	C605
RC32GF684J	81349	37	R511	Z181-5	76385		
RC32GF824J	81349	32	R607	22363	76385		
RC42GF104J	81349	31	R143	082WA	81349	37	V601
RC42GF104J	81349	37	R313	03012470	18876	32	C601
RC42GF104J	81349	37	R324	1MP454	81349	32	C310
RC42GF106K	81349	30	R605	1X28	81349	38	V603
RC42GF154K	81349	30	R606	1X28	81349	33	V604
RC42GF274J	81349	32	R603	118596	78947		M103

SECTION I V

REFERENCE NO.	MFR CODE	FIG. NO.	ITEM NO.	REFERENCE NO.	WFR CODE	NO.	ITEM NO.
12AU7	81349	32	V101	45003371			0104
12AU7	81349	32	V102	45003371	00530		
12AU7	81349	32	V103	45003371	00530		0106
12AU7	81349	32	V104	45003371			0107
12AU7	81349	32	V301	45003371	00530		
12AU7	81349		V304	45003371	00530		0109
12AU7	81349	32	V305	45003371			0110
12AU7	81349	32	V501	45003371	00530		0111
1400	72512		0101	45003371	00530		0112
152212H1	76854		S301	45003371			0113
161-25R	76095	32	L601	45003371	00530		
175	76854	38	S102	45003451	00530		0111
18550	71785		A101	45003451			0112
20HK85I	56289	30	C402	45003451	00530		
20007792	00530	32	T601	45003451	00530		0114
210	82879			45003801			G101
267B	83330	43-1	J301	47	96906	32	1405
267B	83330	43-1	J302	47	96906	33	1401
267B	83330	43-1	J401	47	96906	33	1402
267B	83330	43-1	J501	47	96906	38	1403
267B	83330	43-1	J502	47	96906	38	1404
267B	83330	43-2	J101	43003311	18773		G102
267B	83330	43-2	J102	5ADP1	81349		
267B	83330	43-2	J103	5Y3WGTA			V605
275-1	81860		H105	51896QB2	76854		
275-1	81860		H106	51909QH2	76854		S501
275-1	81860		H107	53CL200KSHVC	12697		
275-1	81860		H108	5726-6AL5W	81349		
3-14	70563			5726-6AL5W	81349		V602
34004071	00530			6J6WA			
342007	75915			6J6WA		37	V503
35	11237	32	R112	6Q5G	81349		
35	11237	32	R514	6005-6AQ5W	a1349		V105
35	11237	33	R308	60056AQ5W		39	V106
37007071	00530		A101	6126			
38000410	00530		H101	74010900			D101
38000420	00530		H102	8071			L601
38000420	00530		H103		71785		A101
42001952	00530			8657	71785		
42706QH2	76854	32	S101	9463-14			
45003371	00530		0103				

LATEST FEDERAL STOCK NUMBER ASSIGNMENTS

STOCK NUMBER	FIGURE NO.	ITEM NO.	STOCK NUMRER	FIGURE NO.	ITEM NO.
5905-00-106-9348	33	R532			R505
5905-00-110-0993	34	R115			R111
5905-00-110-0993	34	R117	5035-m-141-3595	34	R109
5905-00-111-4732		R516	5905-00-141-0595	43-2	R125
5905-00-111-4734	30	R132	5905-00-141-0600		R305
5905-00-111-4734	30	R133	5905-00-141-0600	38	R507
5905-00-111-4734	30	R134	5905-00-141-1165		R519
5905-00-111-4734	30	R522		33	R403
5905-00-111-4734	30	R523	5905-00-542-8744	35	R128
5905-00-111-4734	33	R503	5905-00-542-8744		R319
5905-00-111-4748	37	R511		36	R407
5905-00-111-6009	32	R607	5905-00-542-8744	38	
5905-00-114-5456	33	R518	5935-00-935-2231		X605
5910-00-128-3869	33	C312		32	X606
5910-00-128-3869	33	C505	5935-00-935-2231	32	
5910-00-128-3869	37	C309			

By Order of the Secretary of the Army:

FRED C. WEYAND
General, United States Army
Chief of Staff

Official:

VERNE L. BOWERS
Major General, United States Army
The Adjutant General

Distribution:

Active Army:

USASA (2)	USAIS (2)
Dir of Trans (1)	USAES (2)
COE (1)	AD (1) except
TSG (1)	SAAD (30)
USAARENBD (1)	LBAD (14)
AMC (1)	TOAD (14)
MICOM (2)	USA Dep (2)
TECOM (2)	Sig Sec USA Dep (2)
TRADOC (2)	Sig Dep (2)
ARADCOM (2)	ATS (1)
ARADCOM Rgn (2)	MAAG (1)
OS Maj Comd (4)	WRAMC (1)
LOGCOMD (3)	USARMIS (1)
USACC (4)	USAERDM (1)
MDW (1)	USAERDAW (1)
Armies (2)	Ft Richardson (ECOM Ofc) (2)
Corps (2)	Sig FLDMS (1)
HISA (Ft Monmouth) (43)	Units org under fol TOE: 1 ea
Ft Gordon (10)	11-16
Ft Huachuca (10)	11-85
Ft Carson (5)	11-97
WSMR (1)	11-98
Svc Colleges (1)	11-117
USASESS (5)	11-500 (AA-AC)
USAINTC (3)	32-56
USAADS (2)	32-57
USAFAS (2)	
USAARMS (2)	

ARNG & USAR: None.

For explanation of abbreviations used, see AR 310-50

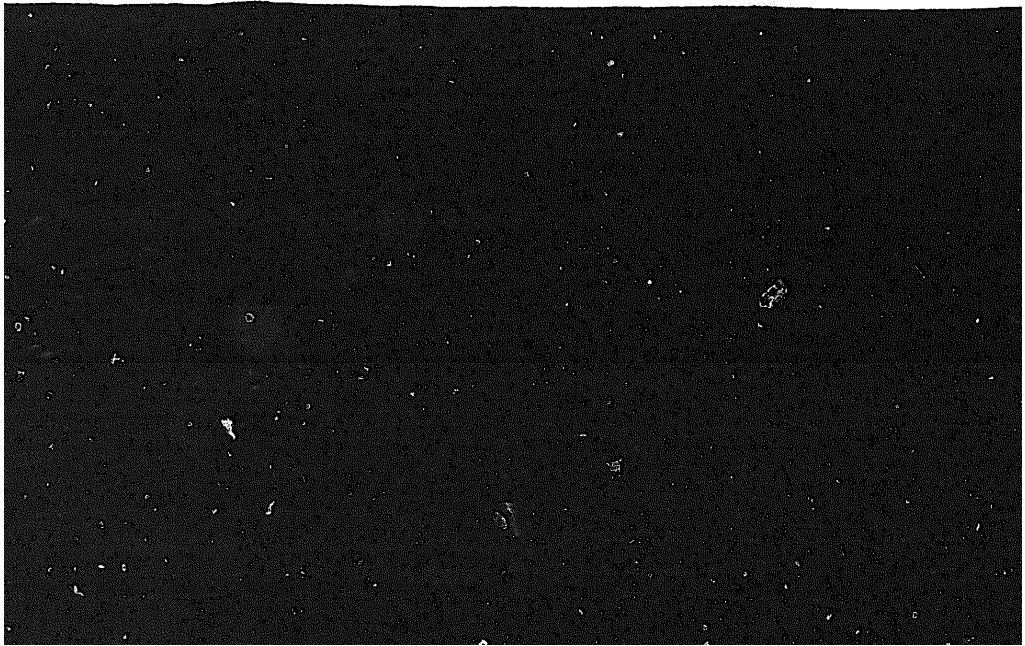
★ U.S. GOVERNMENT PRINTING OFFICE: 1975-665139/710

END

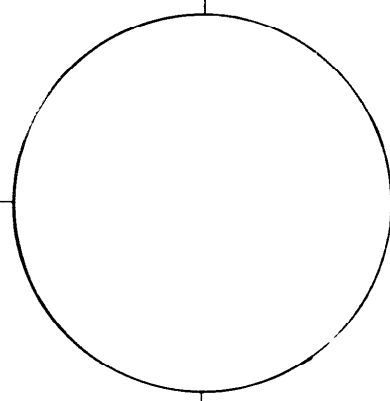
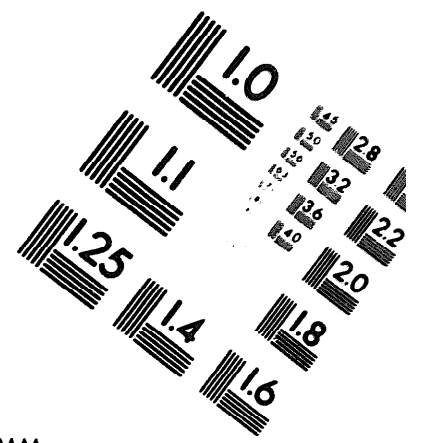
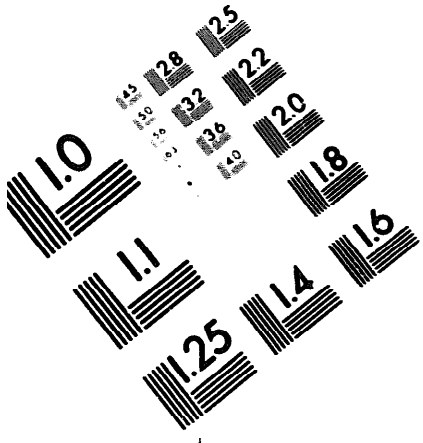
01-21-83

DATE





MICROFORM TEST TARGET



150 MM

1.0 mm (e= 81 mm)

ABCDEFGHIJKLMNQRSTUUVWXYZ1234567890
 abcdefghijklmnopqrstuvwxyz\$c£/%# 1/2 1/4 3/4 —=+ x&@*

1.5 mm (e= 1.09 mm)

ABCDEFGHIJKLMNQRSTUUVWXYZ1234567890
 abcdefghijklmnopqrstuvwxyz\$c£/%# 1/2 1/4 3/4 —=+ x&@*

2.0 mm (e= 1.37 mm)

ABCDEFGHIJKLMNQRSTUUVWXYZ
 abcdefghijklmnopqrstuvwxyz
 1234567890\$c£/%# 1/2 1/4 3/4 —=+ x&@*

2.5 mm (e= 1.77 mm)

ABCDEFGHIJKLMNQRSTUUVWXYZ
 abcdefghijklmnopqrstuvwxyz
 1234567890\$c£/%# 1/2 1/4 3/4 —=+ x&@*

1.0 mm (e= 81 mm)

ABCDEFGHIJKLMNQRSTUUVWXYZ1234567890
 abcdefghijklmnopqrstuvwxyz\$c£/%# 1/2 1/4 3/4 —=+ x&@*

1.5 mm (e= 1.09 mm)

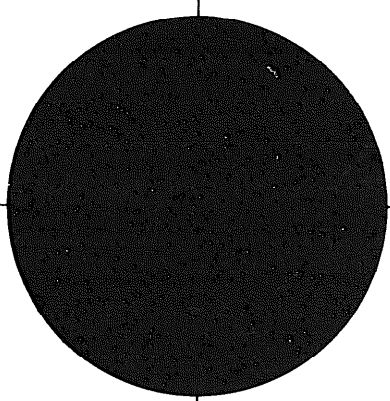
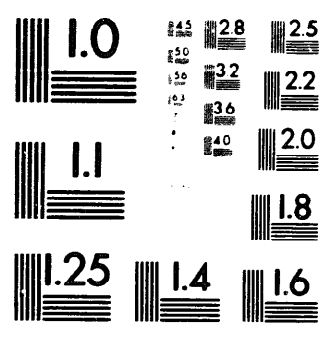
ABCDEFGHIJKLMNQRSTUUVWXYZ1234567890
 abcdefghijklmnopqrstuvwxyz\$c£/%# 1/2 1/4 3/4 —=+ x&@*

2.0 mm (e= 1.37 mm)

ABCDEFGHIJKLMNQRSTUUVWXYZ
 abcdefghijklmnopqrstuvwxyz
 1234567890\$c£/%# 1/2 1/4 3/4 —=+ x&@*

2.5 mm (e= 1.77 mm)

ABCDEFGHIJKLMNQRSTUUVWXYZ
 abcdefghijklmnopqrstuvwxyz
 1234567890\$c£/%# 1/2 1/4 3/4 —=+ x&@*



200 MM

250 MM

